

Center Leg Width

1-5/8"

EI-162H / 0162

22

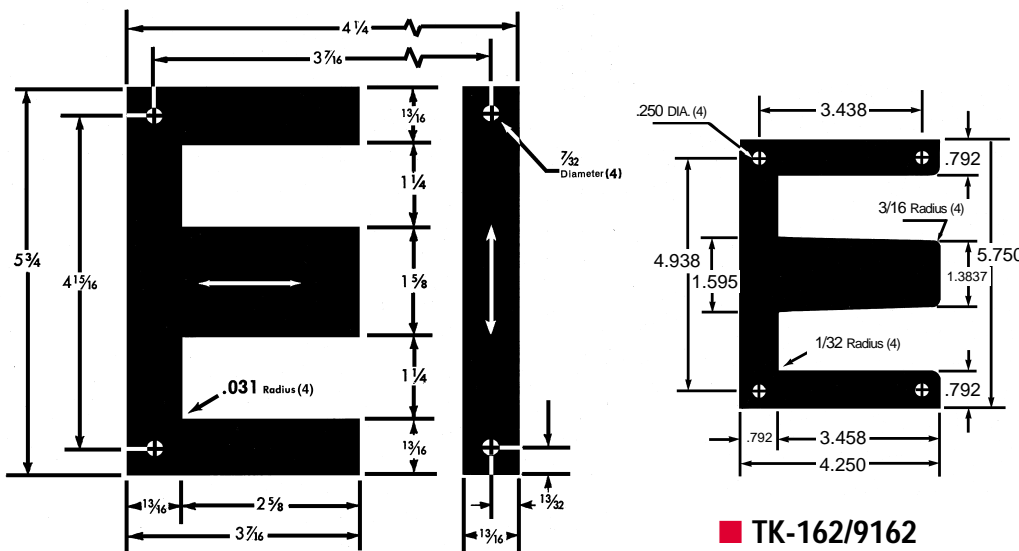
SPECIFICATIONS APPLYING TO CORE STACK WITH SQUARE CROSS SECTIONS



Window Dimensions	2.625 in. x 1.250 in.	3.281 sq. in. –	21.169 sq. cm.
Volume, solid		28.803 cu. in. –	471.991 cu. cm.
Cross Sectional Area, solid		2.641 sq. in. –	17.036 sq. cm.
Length of Magnetic Path		11.000 in. –	27.940 cm.

METRIC EQUIVALENTS

Inches	Millimeters
0.031	.7874
7/32	5.5563
13/32	10.3188
13/16	20.6375
1-1/4	31.7500
1-5/8	41.2750
2-5/8	66.6750
3-7/16	87.3125
4-1/4	107.9500
4-15/16	125.4125
5-3/4	146.0500



■ **TK-162/9162**
(Keeper)

ELECTRICAL STEEL SPECIFICATIONS – Weight and Count

TEMPEL GAUGE			TEMPEL Grade No.	SQUARE STACK SPECIFICATIONS				WEIGHT PER 1000 SETS		
No.	Thickness			Sets of Pieces	Weight per Square Stack		Sets of Pieces		Pounds	Kilograms
	Inches	Millimeter			Pounds	Kilograms	Per lb	Per kg		
29	0.0140	0.36	M-6	116	7.856	3.563	14.8	32.6	67.723	30.719
26	0.0185	0.47	M-19-M-55	88	7.991	3.624	11.0	24.3	90.802	41.187
24	0.0250	0.64	M-19-M-56	65	8.004	3.631	8.1	17.9	123.138	55.855

SPECIFICATIONS APPLYING TO CORE STACK WITH SQUARE CROSS SECTIONS

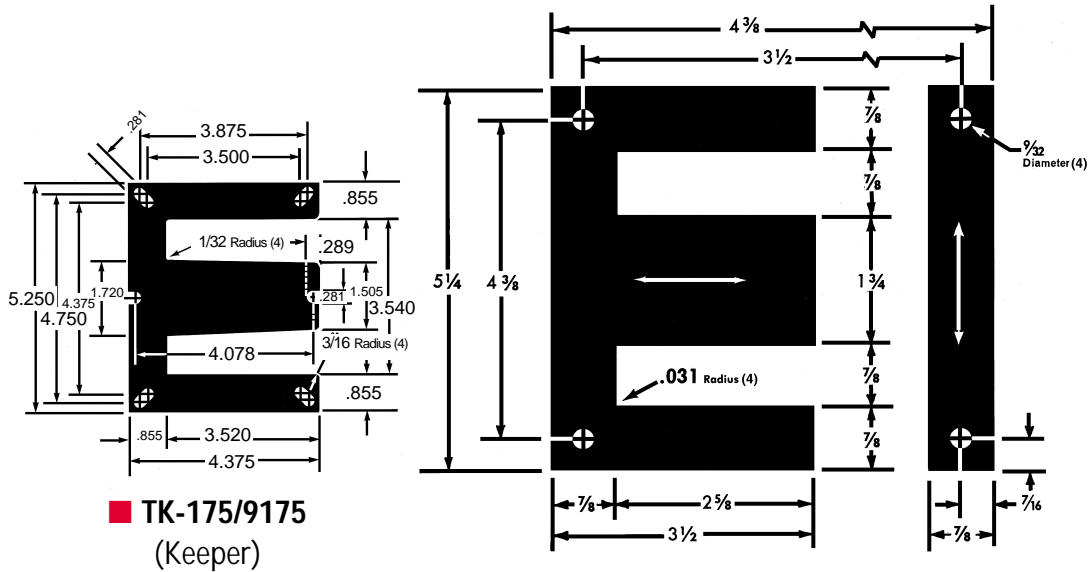
Window Dimensions	2.625 in. x .875 in.	2.297 sq. in. –	14.819 sq. cm.
Volume, solid		31.721 cu. in. –	519.821 cu. cm.
Cross Sectional Area, solid		3.063 sq. in. –	19.758 sq. cm.
Length of Magnetic Path		10.500 in. –	26.670 cm.

Grain Direction
←————→

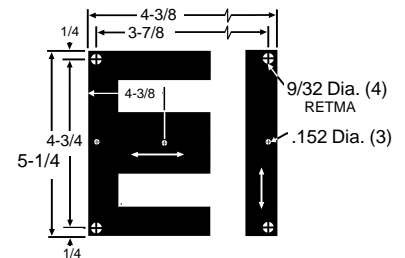
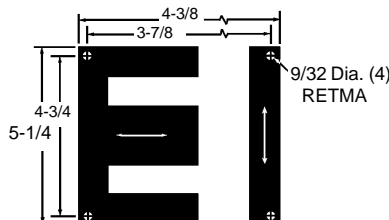
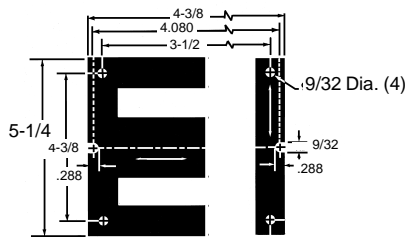
Standard Corner Mounting Holes

METRIC EQUIVALENTS

Inches	Millimeters
.031	0.7874
9/32	7.1438
7/16	11.1125
7/8	22.2250
1-3/4	44.4500
2-5/8	66.6750
3-1/2	88.9000
4-3/8	111.1250
5-1/4	133.3500



Illustrations indicate different sizes and positions of holes available for EI-175 and compatible Keeper. Customizing available.



ELECTRICAL STEEL SPECIFICATIONS – Weight and Count

TEMPEL GAUGE			TEMPEL Grade No.	SQUARE STACK SPECIFICATIONS				WEIGHT PER 1000 SETS		
No.	Thickness			Sets of Pieces	Weight per Square Stack		Sets of Pieces		Pounds	Kilograms
	Inches	Millimeter			Pounds	Kilograms	Per lb	Per kg		
29	0.0140	0.36	M-6	125	8.657	3.927	14.4	31.8	69.258	31.415
26	0.0185	0.47	M-19-M-55	95	8.822	4.001	10.8	23.7	92.860	42.121
24	0.0250	0.64	M-19-M-56	70	8.815	3.998	7.9	17.5	125.929	57.121

Center Leg Width

1-3/4"

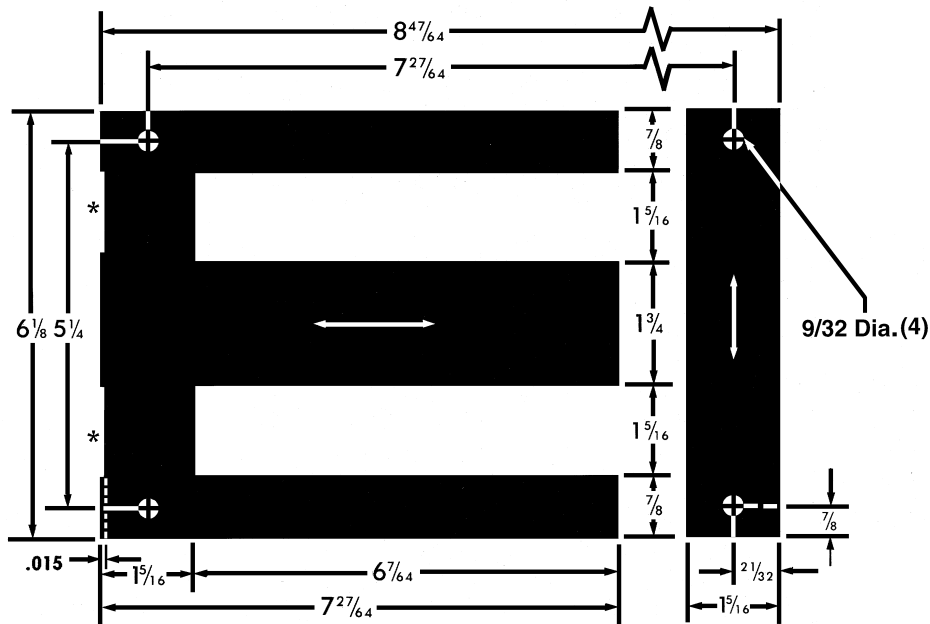
EI-175L / 0182

24

SPECIFICATIONS APPLYING TO CORE STACK WITH SQUARE CROSS SECTIONS



Window Dimensions	6.109 in. x 1.313 in.	8.019 sq. in. –	51.733 sq. cm.
Volume, solid		65.053 cu. in. –	1066.028 cu. cm.
Cross Sectional Area, solid		3.063 sq. in. –	19.758 sq. cm.
Length of Magnetic Path		19.219 in. –	48.816 cm.



METRIC EQUIVALENTS

Inches	Millimeters
.015	0.3810
9/32	7.1450
7/16	11.1125
21/32	16.6700
7/8	22.2250
1-5/16	33.3375
1-3/4	44.4500
5-1/4	133.3500
6-7/64	155.1788
6-1/8	155.5750
7-27/64	188.5163
8-47/64	221.8538

* Overcut

ELECTRICAL STEEL SPECIFICATIONS – Weight and Count

TEMPEL GAUGE			TEMPEL Grade No.	SQUARE STACK SPECIFICATIONS				WEIGHT PER 1000 SETS		
No.	Thickness			Sets of Pieces	Weight per Square Stack		Sets of Pieces		Pounds	Kilograms
	Inches	Millimeter			Pounds	Kilograms	Per lb	Per kg		
29	0.0140	0.36	M-6	125	17.754	8.053	7.0	15.5	142.031	64.425
26	0.0185	0.47	M-19-M-55	95	18.091	8.206	5.3	11.6	190.433	86.380

SPECIFICATIONS APPLYING TO CORE STACK WITH SQUARE CROSS SECTIONS

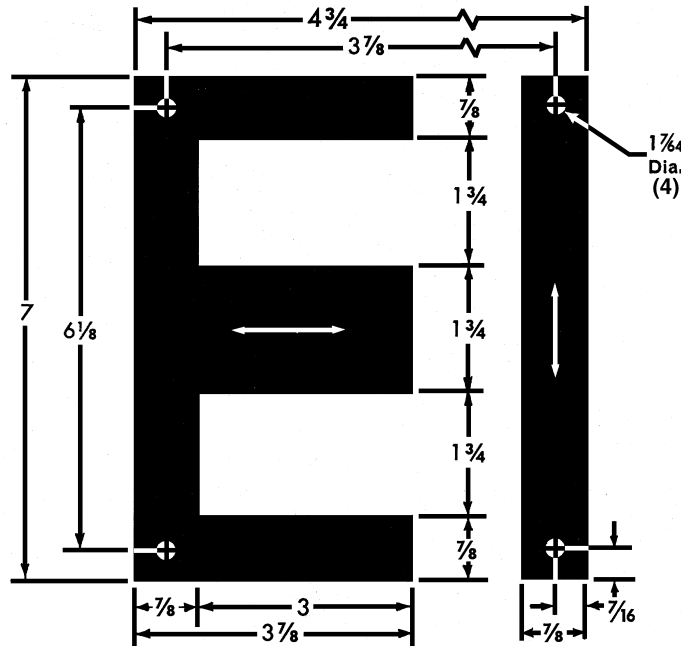
Window Dimensions	3.000 in. x 1.750 in.	5.250 sq. in. –	33.871 sq. cm.
Volume, solid		39.425 cu. in. –	646.055 cu. cm.
Cross Sectional Area, solid		3.063 sq. in. –	19.758 sq. cm.
Length of Magnetic Path		13.000 in. –	33.020 cm.

Grain Direction

Standard Corner Mounting Holes

METRIC EQUIVALENTS

Inches	Millimeters
17/64	6.7469
7/16	11.1125
7/8	22.2250
1-3/4	44.4500
3	76.2000
3-7/8	98.4250
4-3/4	120.6500
6-1/8	155.5750
7	177.8000



EI-19H / 0190

25

ELECTRICAL STEEL SPECIFICATIONS – Weight and Count

TEMPEL GAUGE			TEMPEL Grade No.	SQUARE STACK SPECIFICATIONS				WEIGHT PER 1000 SETS		
No.	Thickness			Sets of Pieces	Weight per Square Stack		Sets of Pieces		Pounds	Kilograms
	Inches	Millimeter			Pounds	Kilograms	Per lb	Per kg		
29	0.0140	0.36	M-6	125	10.760	4.881	11.6	25.6	86.077	39.044
26	0.0185	0.47	M-19-M-55	95	10.964	4.973	8.7	19.1	115.410	52.350
24	0.0250	0.64	M-19-M-56	70	10.991	4.985	6.4	14.0	157.011	71.220

Center Leg Width

1.80"

EI-8100H4 / 0192

26

SPECIFICATIONS APPLYING TO CORE STACK WITH SQUARE CROSS SECTIONS

Grain Direction



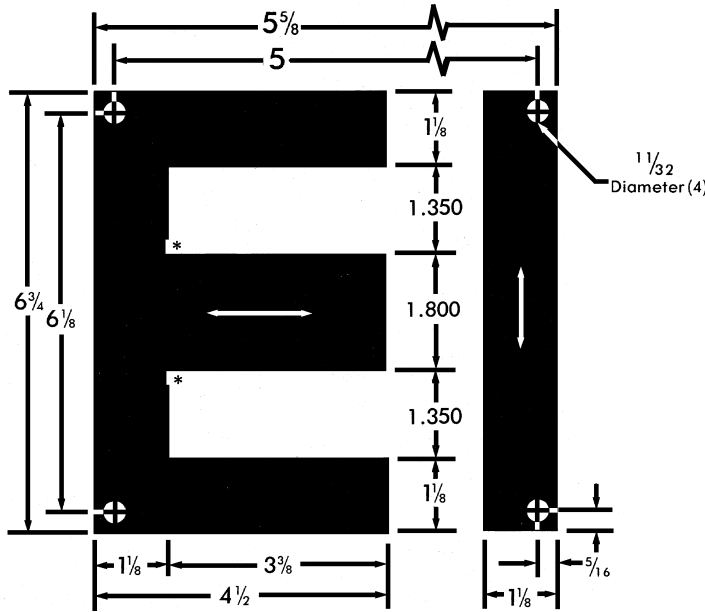
EIA (Retma) Corner

Mounting Holes

Window Dimensions	3.375 in. x 1.350 in.	4.556 sq. in. –	29.395 sq. cm.
Volume, solid		51.273 cu. in. –	840.217 cu. cm.
Cross Sectional Area, solid		3.240 sq. in. –	20.903 sq. cm.
Length of Magnetic Path		13.725 in. –	34.862 cm.

METRIC EQUIVALENTS

Inches	Millimeters
5/16	7.9375
11/32	8.7325
1-1/8	28.5750
1.350	34.2900
1.800	45.7200
3-3/8	85.7250
4-1/2	114.3000
5	127.0000
5-5/8	142.8750
6-1/8	155.5750
6-3/4	171.4500



* Overcut

ELECTRICAL STEEL SPECIFICATIONS – Weight and Count

TEMPEL GAUGE			TEMPEL Grade No.	SQUARE STACK SPECIFICATIONS				WEIGHT PER 1000 SETS		
No.	Thickness			Sets of Pieces	Weight per Square Stack		Sets of Pieces		Pounds	Kilograms
	Inches	Millimeter			Pounds	Kilograms	Per lb	Per kg		
29	0.0140	0.36	M-6	129	14.040	6.368	9.2	20.3	108.836	49.368

SPECIFICATIONS APPLYING TO CORE STACK WITH SQUARE CROSS SECTIONS

Window Dimensions	3.750 in. x 1.500 in.	5.625 sq. in. –	36.290 sq. cm.
Volume, solid		69.788 cu. in. –	1143.630 cm.
Cross Sectional Area, solid		4.000 sq. in. –	25.806 sq. cm.
Length of Magnetic Path		15.250 in. –	38.735 cm.

Grain Direction

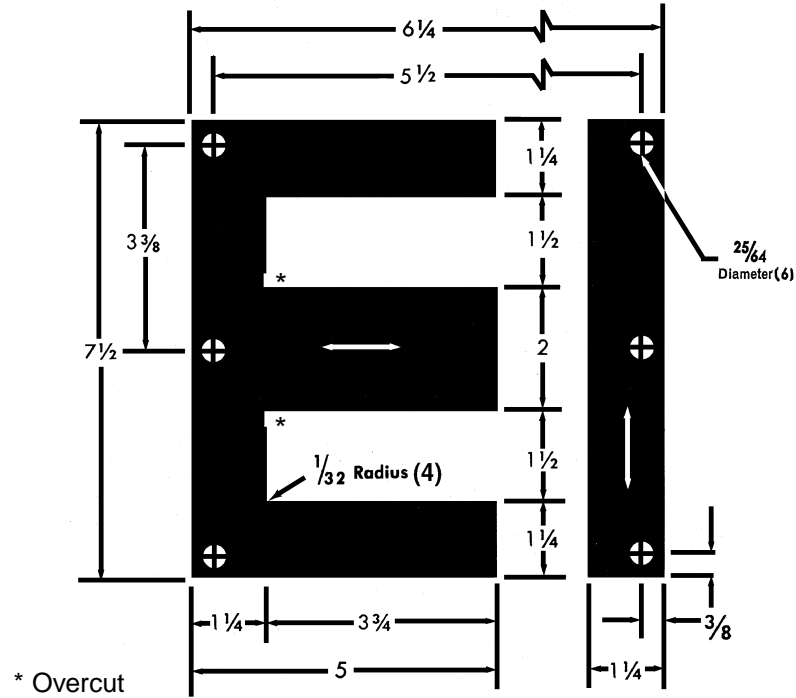


EIA (Retma)

Corner Mounting Holes

METRIC EQUIVALENTS

Inches	Millimeters
1/32	.7938
3/8	9.5250
25/64	9.9219
1-1/4	31.7500
1-1/2	38.1000
2	50.8000
3-3/8	85.7250
3-3/4	95.2500
5	127.0000
5-1/2	139.7000
6-1/4	158.7500
7-1/2	190.5000



EI-200WRH6 / 0200

27

ELECTRICAL STEEL SPECIFICATIONS – Weight and Count

TEMPEL GAUGE			TEMPEL Grade No.	SQUARE STACK SPECIFICATIONS				WEIGHT PER 1000 SETS		
No.	Thickness			Sets of Pieces	Weight per Square Stack		Sets of Pieces		Pounds	Kilograms
	Inches	Millimeter			Pounds	Kilograms	Per lb	Per kg		
29	0.0140	0.36	M-6	143	19.065	8.648	7.5	16.5	133.324	60.475

SPECIFICATIONS APPLYING TO CORE STACK WITH SQUARE CROSS SECTIONS

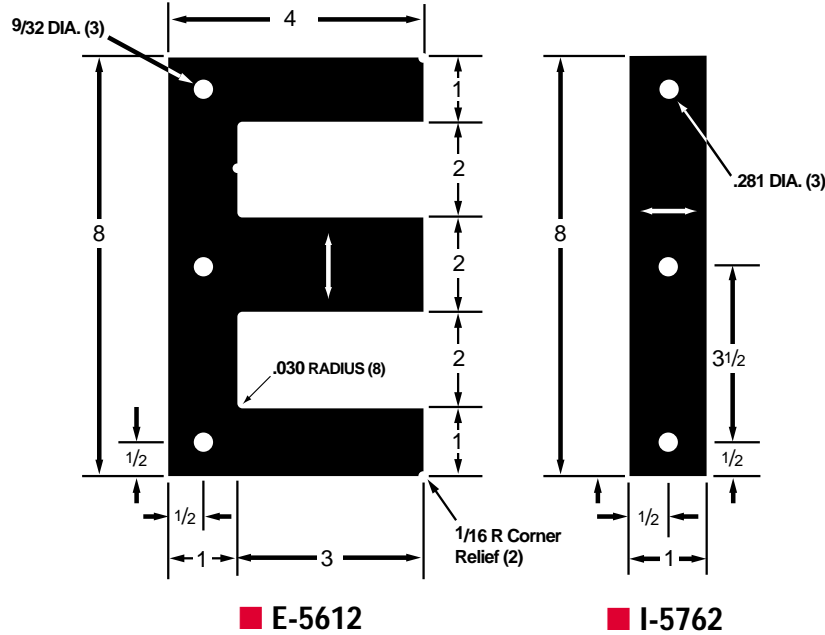
Window Dimensions	2.000 in. x 2.0625 in.	27.615 sq. in. –	178.161 sq. cm.
Volume, solid		55.230 cu. in. –	905.051 cu. cm.
Cross Sectional Area, solid		4.000 sq. in. –	25.806 sq. cm.
Length of Magnetic Path		14.000 in. –	35.560 cm.

Grain Direction

Standard Corner Mounting Holes

METRIC EQUIVALENTS

Inches	Millimeters
.010	00.2540
1/32	00.7928
3/64	01.1906
3/32	02.3813
3/16	04.7625
7/16	11.1125
17/32	13.4938
5/8	15.8750
3/4	19.0500



■ E-5612

■ I-5762

E and I may be purchased separately.

EI-2 5612/5762

29

ELECTRICAL STEEL SPECIFICATIONS – Weight and Count

TEMPEL GAUGE			TEMPEL Grade No.	SQUARE STACK SPECIFICATIONS				WEIGHT PER 1000 SETS		
No.	Thickness			Sets of Pieces	Weight per Square Stack		Sets of Pieces		Pounds	Kilograms
	Inches	Millimeter			Pounds	Kilograms	Per lb	Per kg		
24	0.0250	0.64	M-19-M-56	80	15.663	7.105	5.1	11.3	195.788	88.813

Center Leg Width

2-1/8"

EI-212 / 0212

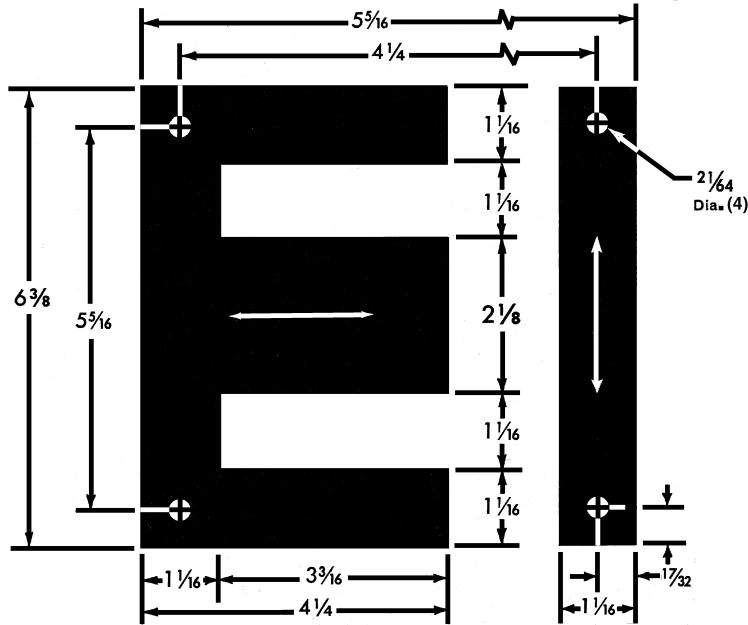
Grain Direction



Standard Corner Mounting Holes

SPECIFICATIONS APPLYING TO CORE STACK WITH SQUARE CROSS SECTIONS

Window Dimensions	3.188 in. x 1.063 in.	3.387 sq. in. –	21.850 sq. cm.
Volume, solid		56.855 cu. in. –	931.696 cu. cm.
Cross Sectional Area, solid		4.516 sq. in. –	29.133 sq. cm.
Length of Magnetic Path		12.750 in. –	32.385 cm.



METRIC EQUIVALENTS

Inches	Millimeters
21/64	8.3344
17/32	13.4938
1-1/16	26.9875
2-1/8	53.9750
3-3/16	80.9625
4-1/4	107.9500
5-5/16	134.9375
6-3/8	161.9250

30

ELECTRICAL STEEL SPECIFICATIONS – Weight and Count

TEMPEL GAUGE			TEMPEL Grade No.	SQUARE STACK SPECIFICATIONS					WEIGHT PER 1000 SETS	
No.	Thickness			Sets of Pieces	Weight per Square Stack		Sets of Pieces		Pounds	Kilograms
	Inches	Millimeter			Pounds	Kilograms	Per lb	Per kg		
29	0.0140	0.36	M-6	152	15.539	7.048	9.8	21.6	102.228	46.370
26	0.0185	0.47	M-19-M-55	115	15.763	7.150	7.3	16.1	137.066	62.173
24	0.0250	0.64	M-19-M-56	85	15.800	7.167	5.4	11.9	185.877	84.313

SPECIFICATIONS APPLYING TO CORE STACK WITH SQUARE CROSS SECTIONS

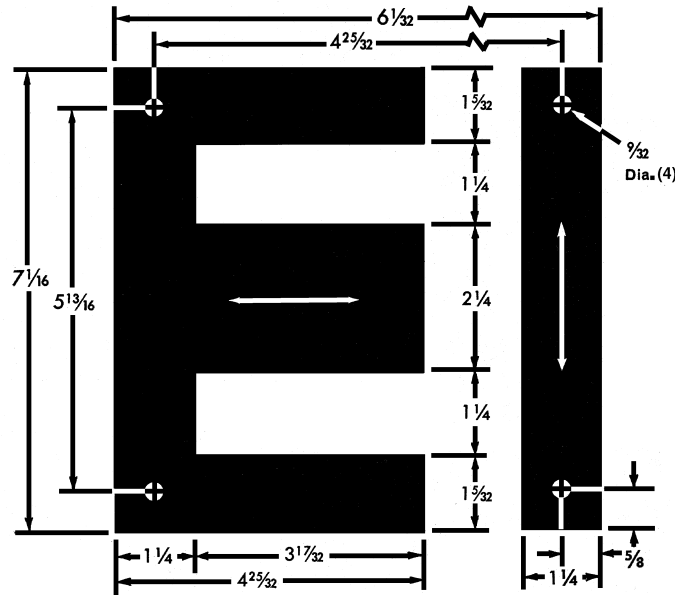
Window Dimensions	3.531 in. x 1.250 in.	4.414 sq. in. –	28.478 sq. cm.
Volume, solid		75.418 cu. in. –	1235.881 cu. cm.
Cross Sectional Area, solid		5.063 sq. in. –	32.661 sq. cm.
Length of Magnetic Path		14.344 in. –	35.433 cm.

Grain Direction

Standard Corner Mounting Holes

METRIC EQUIVALENTS

Inches	Millimeters
9/32	7.1430
5/8	15.8750
1-5/32	29.3688
1-1/4	31.7500
2-1/4	57.1500
3-17/32	89.6938
4-25/32	121.4438
5-13/16	147.6375
6-1/32	153.1938
7-1/16	179.3875



ELECTRICAL STEEL SPECIFICATIONS – Weight and Count

TEMPEL GAUGE			TEMPEL Grade No.	SQUARE STACK SPECIFICATIONS				WEIGHT PER 1000 SETS		
No.	Thickness			Sets of Pieces	Weight per Square Stack		Sets of Pieces		Pounds	Kilograms
	Inches	Millimeter			Pounds	Kilograms	Per lb	Per kg		
29	0.0140	0.36	M-6	161	20.619	9.353	7.8	17.2	128.070	58.092
26	0.0185	0.47	M-19-M-55	122	20.949	9.502	5.8	12.8	171.715	77.889
24	0.0250	0.64	M-19-M-56	90	20.958	9.506	4.3	9.5	232.865	105.627

Center Leg Width

2-1/4"

EI-225RH / 0227

Grain Direction



EIA (Retma)

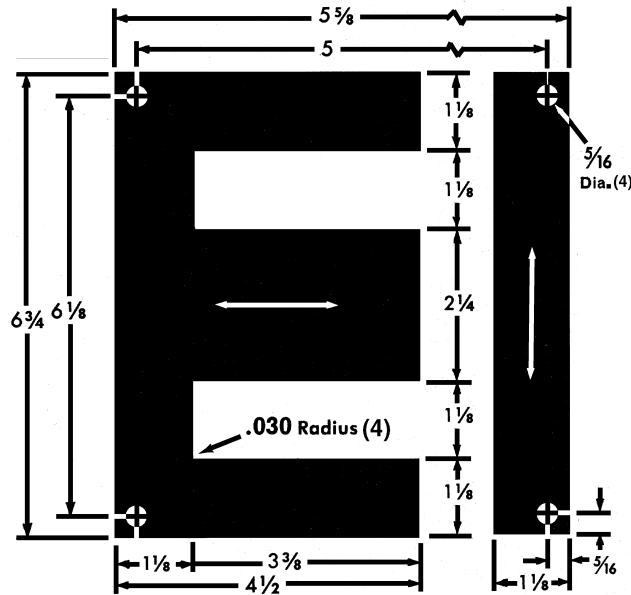
Corner Mounting Holes

SPECIFICATIONS APPLYING TO CORE STACK WITH SQUARE CROSS SECTIONS

Window Dimensions	3.375 in. x 1.125 in.	3.797 sq. in. –	24.496 sq. cm.
Volume, solid		67.653 cu. in. –	1108.644 cu. cm.
Cross Sectional Area, solid		5.063 sq. in. –	32.661 sq. cm.
Length of Magnetic Path		13.500 in. –	34.290 cm.

METRIC EQUIVALENTS

Inches	Millimeters
.030	0.7620
5/16	7.9375
1-1/8	28.5750
2-1/4	57.1500
3-3/8	85.7250
4-1/2	114.3000
5	127.0000
5-5/8	142.8750
6-1/8	155.5750
6-3/4	171.4500



32

ELECTRICAL STEEL SPECIFICATIONS – Weight and Count

TEMPEL GAUGE			TEMPEL Grade No.	SQUARE STACK SPECIFICATIONS				WEIGHT PER 1000 SETS		
No.	Thickness			Sets of Pieces	Weight per Square Stack		Sets of Pieces		Pounds	Kilograms
	Inches	Millimeter			Pounds	Kilograms	Per lb	Per kg		
29	0.0140	0.36	M-6	161	18.496	8.390	8.7	19.2	114.885	52.111
26	0.0185	0.47	M-19-M-55	122	18.792	8.524	6.5	14.3	154.036	69.870

SPECIFICATIONS APPLYING TO CORE STACK WITH SQUARE CROSS SECTIONS

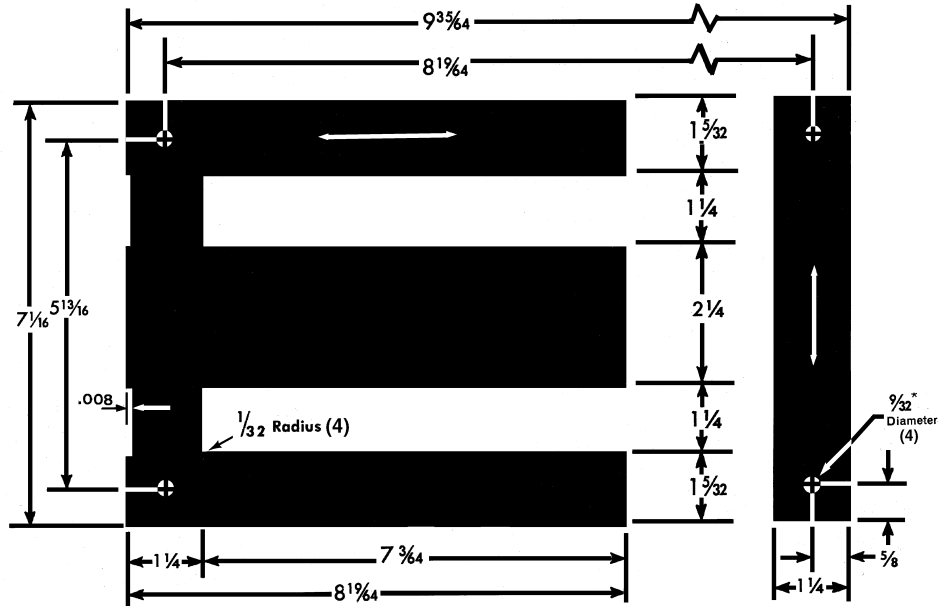
Window Dimensions	7.047 in. x 1.250 in.	8.809 sq. in. –	56.830 sq. cm.
Volume, solid		111.463 cu. in. –	1826.555 cu. cm.
Cross Sectional Area, solid		5.063 sq. in. –	32.661 sq. cm.
Length of Magnetic Path		21.375 in. –	54.293 cm.

Grain Direction

Standard Corner Mounting Holes

METRIC EQUIVALENTS

Inches	Millimeters
1/32	0.7938
9/32	7.1438
5/8	15.8750
1-5/32	29.3688
1-1/4	31.7500
2-1/4	57.1500
5-13/16	147.6375
7-3/64	178.9906
7-1/16	179.3875
8-19/64	210.7406
9-35/64	242.4906



11/32" Diameter holes are available for part number EI-225L1/0231

EI-225L / 0230

33

ELECTRICAL STEEL SPECIFICATIONS – Weight and Count

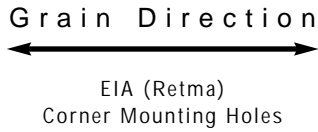
TEMPEL GAUGE			TEMPEL Grade No.	SQUARE STACK SPECIFICATIONS				WEIGHT PER 1000 SETS		
No.	Thickness			Sets of Pieces	Weight per Square Stack		Sets of Pieces		Pounds	Kilograms
	Inches	Millimeter			Pounds	Kilograms	Per lb	Per kg		
29	0.0140	0.36	M-6	161	30.474	13.8213	5.3	11.6	189.280	85.857
26	0.0185	0.47	M-19-M-55	122	30.962	14.044	3.9	8.7	253.783	115.115
24	0.0250	0.64	M-19-M-56	90	30.974	14.050	2.9	6.4	344.160	156.110

Center Leg Width
2-1/2"

EI-250R4N / 0249

34

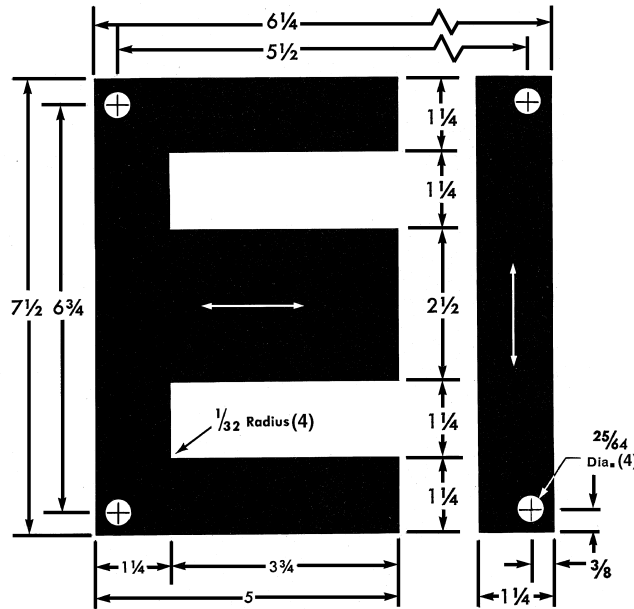
SPECIFICATIONS APPLYING TO CORE STACK WITH SQUARE CROSS SECTIONS



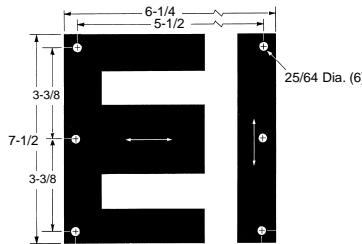
Window Dimensions	3.750 in. x 1.250 in.	4.688 sq. in. –	30.245 sq. cm.
Volume, solid		92.552 cu. in. –	1516.650 cu. cm.
Cross Sectional Area, solid		6.250 sq. in. –	40.323 sq. cm.
Length of Magnetic Path		15.000 in. –	38.100 cm.

METRIC EQUIVALENTS

Inches	Millimeters
1/32	.7938
3/8	9.5250
25/64	9.9219
1-1/4	31.7500
2-1/2	63.5000
3-3/4	95.2500
5	127.0000
5-1/2	139.7000
6-1/4	158.7500
6-3/4	171.4500
7-1/2	190.5000



Illustrations indicate different sizes and positions of holes available for EI-250. Customizing available.



■ EI-250R6N/0250

ELECTRICAL STEEL SPECIFICATIONS – Weight and Count

TEMPEL GAUGE			TEMPEL Grade No.	SQUARE STACK SPECIFICATIONS				WEIGHT PER 1000 SETS		
No.	Thickness			Sets of Pieces	Weight per Square Stack		Sets of Pieces		Pounds	Kilograms
	Inches	Millimeter			Pounds	Kilograms	Per lb	Per kg		
29	0.0140	0.36	M-6	179	25.319	11.485	7.1	15.6	141.449	64.161
26	0.0185	0.47	M-19-M-55	135	25.603	11.613	5.3	11.6	189.653	88.026
24	0.0250	0.64	M-19-M-56	100	25.719	11.666	3.9	8.6	257.191	116.661

Center Leg Width

2-7/8"

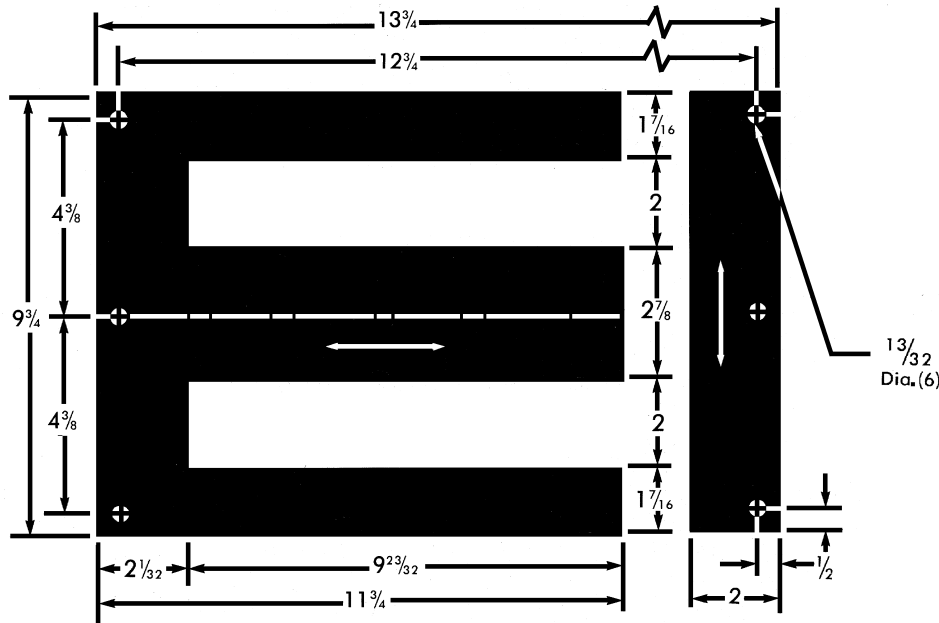
EI-287RH / 0285

36

SPECIFICATIONS APPLYING TO CORE STACK WITH SQUARE CROSS SECTIONS

Grain Direction
 ←————→
 EIA (Retma)
 Corner Mounting Holes
 with Additional Holes

Window Dimensions	9.719 in. x 2.000 in.	19.438 sq. in. –	125.403 sq. cm.
Volume, solid		271.428 cu. in. –	4447.919 cu. cm.
Cross Sectional Area, solid		8.266 sq. in. –	53.327 sq. cm.
Length of Magnetic Path		30.344 in. –	77.073 cm.



METRIC EQUIVALENTS

Inches	Millimeters
13/32	10.3200
1/2	12.7000
1-7/16	36.5125
2	50.8000
2-1/32	51.5950
2-7/8	73.0250
4-3/8	111.1250
9-23/32	246.8563
9-3/4	247.6500
11-3/4	298.4500
12-3/4	323.8500
13-3/4	349.2500

ELECTRICAL STEEL SPECIFICATIONS – Weight and Count

TEMPEL GAUGE			TEMPEL Grade No.	SQUARE STACK SPECIFICATIONS				WEIGHT PER 1000 SETS		
No.	Thickness			Sets of Pieces	Weight per Square Stack		Sets of Pieces		Pounds	Kilograms
	Inches	Millimeter			Pounds	Kilograms	Per lb	Per kg		
29	0.0140	0.36	M-6	205	73.948	33.543	2.8	6.1	360.722	163.622

SPECIFICATIONS APPLYING TO CORE STACK WITH SQUARE CROSS SECTIONS

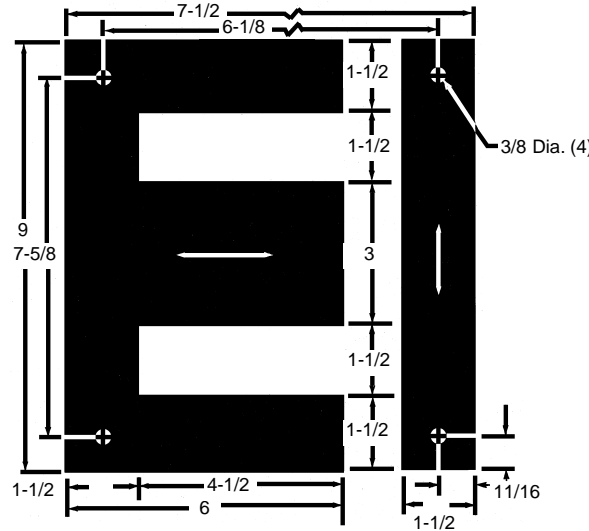
Window Dimensions	4.500 in. x 1.500 in.	6.750 sq. in. –	43.548 sq. cm.
Volume, solid		160.675 cu. in. –	2632.991 cu. cm.
Cross Sectional Area, solid		9.000 sq. in. –	58.064 sq. cm.
Length of Magnetic Path		18.000 in. –	45.720 cm.

Grain Direction

Standard Corner Mounting Holes

METRIC EQUIVALENTS

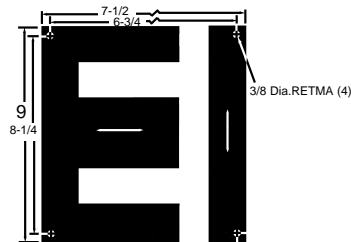
Inches	Millimeters
3/8	9.5250
3/4	19.0500
1-1/2	38.1000
3	76.2000
4-1/2	114.3000
6	152.4000
6-1/8	155.5750
7-1/2	190.5000
7-5/8	193.6750
9	228.6000



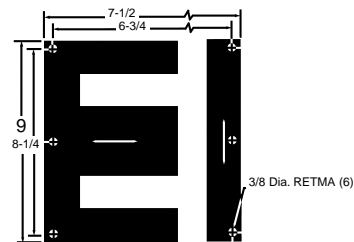
EI-300H / 0300

37

Illustrations indicate different sizes and positions of holes available for EI-300. Customizing available.



■ EI-300RH4/301



■ EI-300RH6/0303

ELECTRICAL STEEL SPECIFICATIONS – Weight and Count

TEMPEL GAUGE			TEMPEL Grade No.	SQUARE STACK SPECIFICATIONS				WEIGHT PER 1000 SETS		
No.	Thickness			Sets of Pieces	Weight per Square Stack		Sets of Pieces		Pounds	Kilograms
	Inches	Millimeter			Pounds	Kilograms	Per lb	Per kg		
29	0.0140	0.36	M-6	214	43.792	19.864	4.9	10.8	204.636	92.822
26	0.0185	0.47	M-19-M-55	162	44.448	20.162	3.6	8.0	274.373	124.455

Center Leg Width

4"

EI-400RH6 / 0400

38

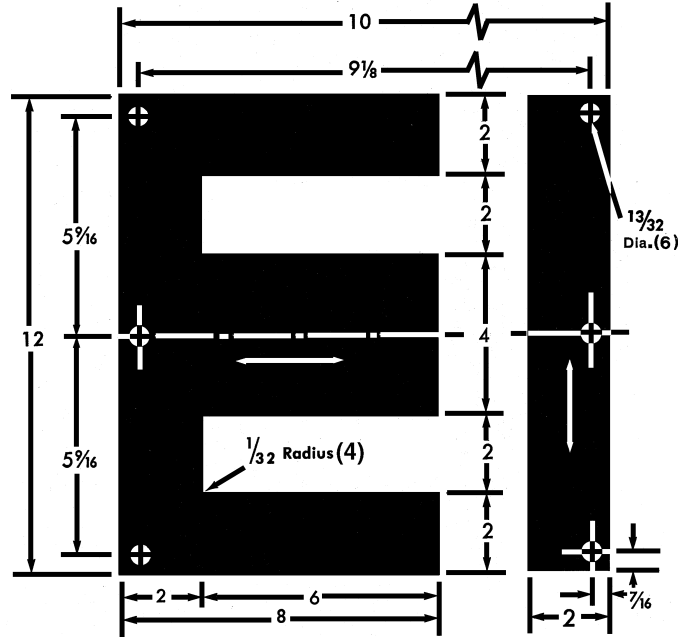
SPECIFICATIONS APPLYING TO CORE STACK WITH SQUARE CROSS SECTIONS

Grain Direction



EIA (Retma)
Corner Mounting Holes
with Additional Holes

Window Dimensions	6.000 in. x 2.000 in.	12.000 sq. in. –	77.419 sq. cm.
Volume, solid		380.889 cu. in. –	6241.668 cu. cm.
Cross Sectional Area, solid		16.000 sq. in. –	103.226 sq. cm.
Length of Magnetic Path		24.000 in. –	60.960 cm.



METRIC EQUIVALENTS

Inches	Millimeters
1/32	0.7938
13/32	10.3188
7/16	11.1125
2	50.8000
4	101.6000
6	152.4000
8	203.2000
9-1/8	231.7750
10	254.0000
11-1/8	282.5750
12	304.8000

ELECTRICAL STEEL SPECIFICATIONS – Weight and Count

TEMPEL GAUGE			TEMPEL Grade No.	SQUARE STACK SPECIFICATIONS				WEIGHT PER 1000 SETS		
No.	Thickness			Sets of Pieces	Weight per Square Stack		Sets of Pieces		Pounds	Kilograms
	Inches	Millimeter			Pounds	Kilograms	Per lb	Per kg		
29	0.0140	0.36	M-6	286	104.054	47.199	2.7	6.1	363.826	165.030
26	0.0185	0.47	M-19-M-55	216	105.368	47.794	2.0	4.5	487.813	221.271

SPECIFICATIONS APPLYING TO CORE STACK WITH SQUARE CROSS SECTIONS

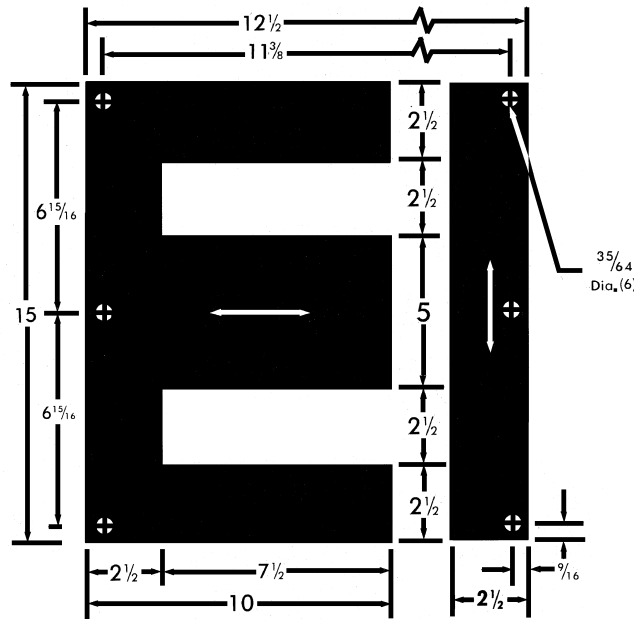
Window Dimensions	7.5000 in. x 2.500 in.	18.750 sq. in. –	120.968 sq. cm.
Volume, solid		742.953 cu. in. –	12174.850 cu. cm.
Cross Sectional Area, solid		25.000 sq. in. –	161.290 sq. cm.
Length of Magnetic Path		30.000 in. –	76.200 cm.

Grain Direction

EIA (Retma) Corner Mounting Holes with Additional Holes

METRIC EQUIVALENTS

Inches	Millimeters
35/64	13.8913
9/16	14.2875
2-1/2	63.5000
5	127.0000
6-15/16	176.2125
7-1/2	190.5000
10	254.0000
11-3/8	288.9250
12-1/2	317.5000
15	381.0000



EI-500RH6 / 0501

39

ELECTRICAL STEEL SPECIFICATIONS – Weight and Count

TEMPEL GAUGE			TEMPEL Grade No.	SQUARE STACK SPECIFICATIONS					WEIGHT PER 1000 SETS	
No.	Thickness			Sets of Pieces	Weight per Square Stack		Sets of Pieces		Pounds	Kilograms
	Inches	Millimeter			Pounds	Kilograms	Per lb	Per kg		
29	0.0140	0.36	M-6	357	202.682	91.936	1.8	3.9	567.737	257.524
26	0.0185	0.47	M-19-M-55	270	204.866	92.902	1.3	2.9	758.763	344.110