

SPECIFICATIONS APPLYING TO CORE STACK WITH SQUARE CROSS SECTIONS

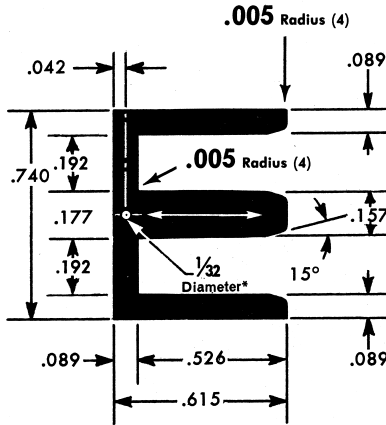
| | | | |
|-----------------------------|---------------------|----------------|--------------|
| Window Dimensions | .438 in. x .188 in. | .082 sq. in. – | .529 sq. cm. |
| Volume, solid | | .057 cu. in. – | .932 cu. cm. |
| Cross Sectional Area, solid | | .035 sq. in. – | .227 sq. cm. |
| Length of Magnetic Path | | 1.625 in. – | 4.127 cm. |

Grain Direction

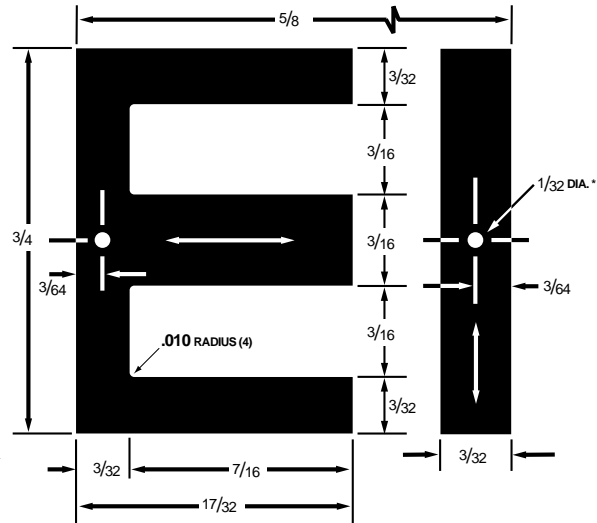
*Wire Holes

METRIC EQUIVALENTS

| Inches | Millimeters |
|--------|-------------|
| .010 | 0.2540 |
| 1/32 | 0.7928 |
| 3/64 | 1.1906 |
| 3/32 | 2.3813 |
| 3/16 | 4.7625 |
| 7/16 | 11.1125 |
| 17/32 | 13.4938 |
| 5/8 | 15.8750 |
| 3/4 | 19.0500 |



TK-18 / 9018
(Keeper)



EI-18 / 0018

1

ELECTRICAL STEEL SPECIFICATIONS – Weight and Count

| TEMPEL GAUGE | | | TEMPEL Grade No. | SQUARE STACK SPECIFICATIONS | | | | WEIGHT PER 1000 SETS | | |
|--------------|-----------|------------|------------------|-----------------------------|-------------------------|-----------|----------------|----------------------|--------|-----------|
| No. | Thickness | | | Sets of Pieces | Weight per Square Stack | | Sets of Pieces | | Pounds | Kilograms |
| | Inches | Millimeter | | | Pounds | Kilograms | Per lb | Per kg | | |
| 29 | 0.0140 | 0.36 | M-6 | 13 | 0.015 | 0.007 | 863.1 | 1902.8 | 1.157 | 0.526 |
| 26 | 0.0185 | 0.47 | M-19-M-55 | 10 | 0.016 | 0.007 | 643.7 | 1419.2 | 1.554 | 0.705 |

Center Leg Width

1/4"

EI-25 / 0025

2

SPECIFICATIONS APPLYING TO CORE STACK WITH SQUARE CROSS SECTIONS

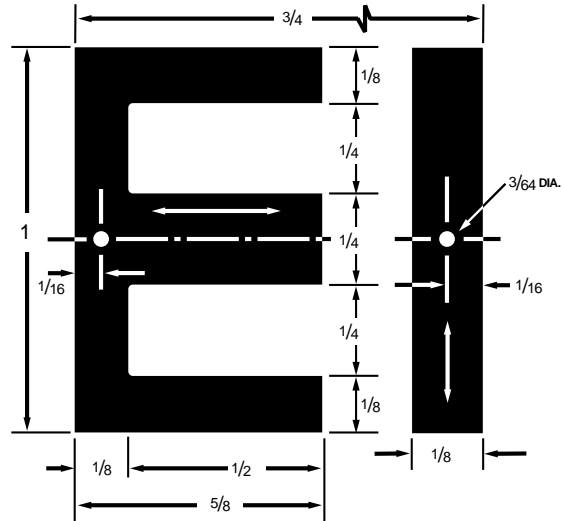
Grain Direction


*Wire Holes

| | | | |
|-----------------------------|---------------------|----------------|---------------|
| Window Dimensions | .500 in. x .250 in. | .125 sq. in. – | .806 sq. cm. |
| Volume, solid | | .124 cu. in. – | 2.034 cu. cm. |
| Cross Sectional Area, solid | | .063 sq. in. – | .403 sq. cm. |
| Length of Magnetic Path | | 2.000 in. – | 5.080 cm. |

METRIC EQUIVALENTS

| Inches | Millimeters |
|--------|-------------|
| 3/64 | 1.1906 |
| 1/16 | 1.5875 |
| 1/8 | 3.1750 |
| 1/4 | 6.3500 |
| 1/2 | 12.7000 |
| 5/8 | 15.8750 |
| 3/4 | 19.0500 |
| 1 | 25.4000 |



ELECTRICAL STEEL SPECIFICATIONS – Weight and Count

| TEMPEL GAUGE | | | TEMPEL Grade No. | SQUARE STACK SPECIFICATIONS | | | | WEIGHT PER 1000 SETS | | |
|--------------|-----------|------------|------------------|-----------------------------|-------------------------|-----------|----------------|----------------------|--------|-----------|
| No. | Thickness | | | Sets of Pieces | Weight per Square Stack | | Sets of Pieces | | Pounds | Kilograms |
| | Inches | Millimeter | | | Pounds | Kilograms | Per lb | Per kg | | |
| 29 | 0.0140 | 0.36 | M-6 | 18 | 0.034 | 0.016 | 527.2 | 1162.2 | 1.897 | 0.860 |
| 26 | 0.0185 | 0.47 | M-19-M-55 | 14 | 0.036 | 0.016 | 393.2 | 866.8 | 2.543 | 1.154 |

SPECIFICATIONS APPLYING TO CORE STACK WITH SQUARE CROSS SECTIONS

| | | | |
|-----------------------------|---------------------|----------------|---------------|
| Window Dimensions | .750 in. x .313 in. | .234 sq. in. – | 1.512 sq. cm. |
| Volume, solid | | .399 cu. in. – | 6.540 cu. cm. |
| Cross Sectional Area, solid | | .141 sq. in. – | .907 sq. cm. |
| Length of Magnetic Path | | 2.875 in. – | 7.302 cm. |

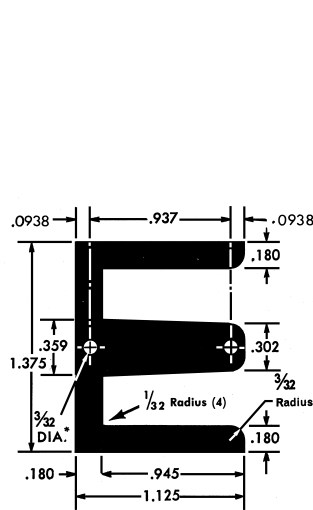
Grain Direction



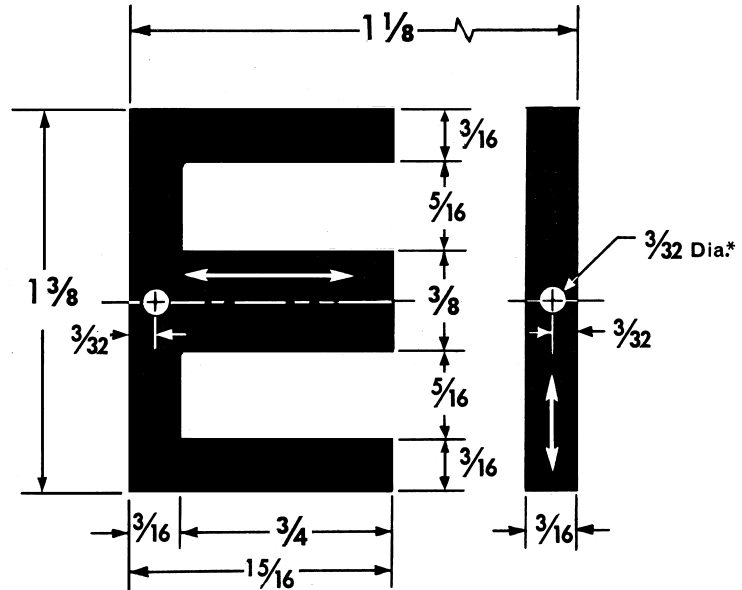
*Wire Holes

METRIC EQUIVALENTS

| Inches | Millimeters |
|--------|-------------|
| 3/32 | 2.3813 |
| 3/16 | 4.7625 |
| 5/16 | 7.9375 |
| 3/8 | 9.5250 |
| 3/4 | 19.0500 |
| 15/16 | 23.8125 |
| 1-1/8 | 28.5750 |
| 1-3/8 | 34.9250 |



TK-37 / 9037
(Keeper)



EI-37 / 0037

3

ELECTRICAL STEEL SPECIFICATIONS – Weight and Count

| TEMPEL GAUGE | | | TEMPEL Grade No. | SQUARE STACK SPECIFICATIONS | | | | WEIGHT PER 1000 SETS | | |
|--------------|-----------|------------|------------------|-----------------------------|-------------------------|-----------|----------------|----------------------|--------|-----------|
| No. | Thickness | | | Sets of Pieces | Weight per Square Stack | | Sets of Pieces | | Pounds | Kilograms |
| | Inches | Millimeter | | | Pounds | Kilograms | Per lb | Per kg | | |
| 29 | 0.0140 | 0.36 | M-6 | 27 | 0.110 | 0.050 | 245.9 | 542.1 | 4.067 | 1.845 |
| 26 | 0.0185 | 0.47 | M-19-M-55 | 20 | 0.109 | 0.050 | 183.4 | 404.3 | 5.452 | 2.473 |
| 24 | 0.0250 | 0.64 | M-19-M-56 | 15 | 0.111 | 0.050 | 135.2 | 298.2 | 7.394 | 3.354 |

Center Leg Width

1/2"

EI-50 / 0050

4

SPECIFICATIONS APPLYING TO CORE STACK WITH SQUARE CROSS SECTIONS

Grain Direction

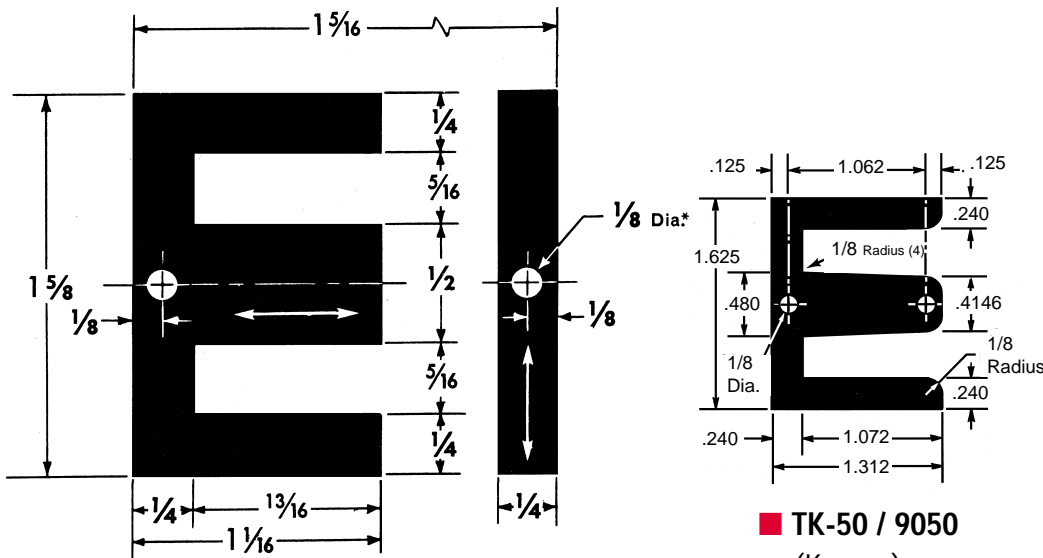


*Wire Holes

| | | | |
|-----------------------------|---------------------|----------------|----------------|
| Window Dimensions | .813 in. x .313 in. | .254 sq. in. – | 1.638 sq. cm. |
| Volume, solid | | .800 cu. in. – | 13.113 cu. cm. |
| Cross Sectional Area, solid | | .250 sq. in. – | 1.613 sq. cm. |
| Length of Magnetic Path | | 3.250 in. – | 8.255 cm. |

METRIC EQUIVALENTS

| Inches | Millimeters |
|--------|-------------|
| 1/8 | 3.1750 |
| 1/4 | 6.3500 |
| 5/16 | 7.9375 |
| 1/2 | 12.7000 |
| 13/16 | 20.6375 |
| 1-1/16 | 26.9875 |
| 1-5/16 | 33.3375 |
| 1-5/8 | 41.2750 |



ELECTRICAL STEEL SPECIFICATIONS – Weight and Count

| TEMPEL GAUGE | | | TEMPEL Grade No. | SQUARE STACK SPECIFICATIONS | | | | WEIGHT PER 1000 SETS | | |
|--------------|-----------|------------|------------------|-----------------------------|-------------------------|-----------|----------------|----------------------|--------|-----------|
| No. | Thickness | | | Sets of Pieces | Weight per Square Stack | | Sets of Pieces | | Pounds | Kilograms |
| | Inches | Millimeter | | | Pounds | Kilograms | Per lb | Per kg | | |
| 29 | 0.0140 | 0.36 | M-6 | 36 | 0.220 | 0.100 | 163.5 | 360.5 | 6.115 | 2.774 |
| 26 | 0.0185 | 0.47 | M-19-M-55 | 27 | 0.221 | 0.100 | 122.0 | 268.9 | 8.199 | 3.719 |
| 24 | 0.0250 | 0.64 | M-19-M-56 | 20 | 0.222 | 0.101 | 89.9 | 198.3 | 11.119 | 5.043 |

SPECIFICATIONS APPLYING TO CORE STACK WITH SQUARE CROSS SECTIONS

| | | | |
|-----------------------------|---------------------|----------------|----------------|
| Window Dimensions | .750 in. x .250 in. | .188 sq. in. – | 1.210 sq. cm. |
| Volume, solid | | .738 cu. in. – | 12.089 cu. cm. |
| Cross Sectional Area, solid | | .250 sq. in. – | 1.613 sq. cm. |
| Length of Magnetic Path | | 3.000 in. – | 7.620 cm. |

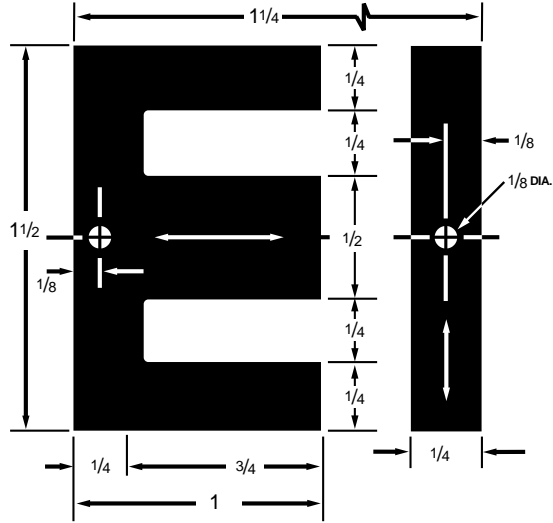
Grain Direction



*Wire Holes

METRIC EQUIVALENTS

| Inches | Millimeters |
|--------|-------------|
| 1/8 | 3.1750 |
| 1/4 | 6.3500 |
| 1/2 | 12.7000 |
| 3/4 | 19.0500 |
| 1 | 25.4000 |
| 1-1/4 | 31.7500 |
| 1-1/2 | 38.1000 |



EI-50S / 0051

5

ELECTRICAL STEEL SPECIFICATIONS – Weight and Count

| TEMPEL GAUGE | | | TEMPEL Grade No. | SQUARE STACK SPECIFICATIONS | | | | | WEIGHT PER 1000 SETS | |
|--------------|-----------|------------|------------------|-----------------------------|-------------------------|-----------|----------------|--------|----------------------|-----------|
| No. | Thickness | | | Sets of Pieces | Weight per Square Stack | | Sets of Pieces | | Pounds | Kilograms |
| | Inches | Millimeter | | | Pounds | Kilograms | Per lb | Per kg | | |
| 29 | 0.0140 | 0.36 | M-6 | 36 | 0.203 | 0.092 | 177.4 | 391.1 | 5.637 | 2.557 |
| 26 | 0.0185 | 0.47 | M-19-M-55 | 27 | 0.204 | 0.093 | 132.3 | 291.7 | 7.559 | 3.429 |

Center Leg Width

9/16"

EI-56 / 0067

6

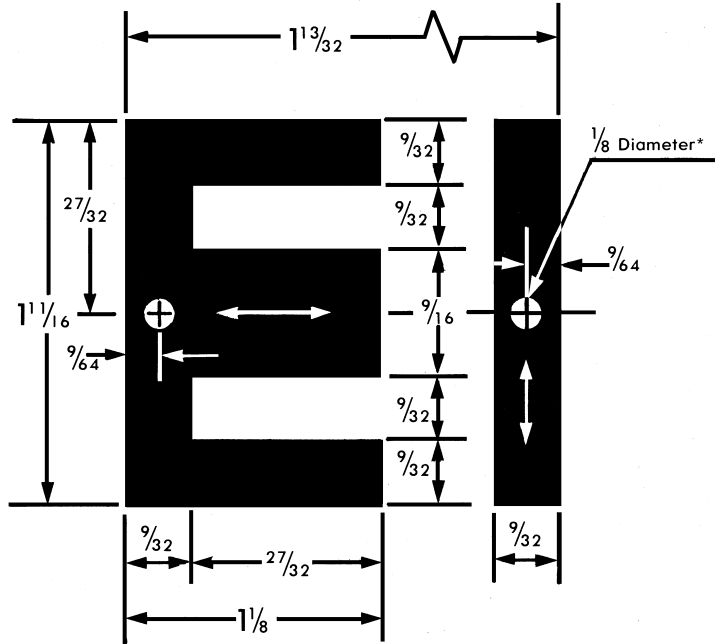
SPECIFICATIONS APPLYING TO CORE STACK WITH SQUARE CROSS SECTIONS

Grain Direction



*Wire Holes

| | | | |
|-----------------------------|---------------------|-----------------|----------------|
| Window Dimensions | .844 in. x .281 in. | .237 sq. in. – | 1.531 sq. cm. |
| Volume, solid | | 1.054 cu. in. – | 17.273 cu. cm. |
| Cross Sectional Area, solid | | .316 sq. in. – | 2.041 sq. cm. |
| Length of Magnetic Path | | 3.375 in. – | 8.573 cm. |



METRIC EQUIVALENTS

| Inches | Millimeters |
|---------|-------------|
| 1/8 | 3.1750 |
| 9/64 | 3.5712 |
| 9/32 | 7.1450 |
| 9/16 | 14.2875 |
| 27/32 | 21.4325 |
| 1-1/8 | 28.5750 |
| 1-13/32 | 35.7200 |
| 1-11/16 | 42.8625 |

ELECTRICAL STEEL SPECIFICATIONS – Weight and Count

| TEMPEL GAUGE | | | TEMPEL Grade No. | SQUARE STACK SPECIFICATIONS | | | | WEIGHT PER 1000 SETS | | |
|--------------|-----------|------------|------------------|-----------------------------|-------------------------|-----------|----------------|----------------------|--------|-----------|
| No. | Thickness | | | Sets of Pieces | Weight per Square Stack | | Sets of Pieces | | Pounds | Kilograms |
| | Inches | Millimeter | | | Pounds | Kilograms | Per lb | Per kg | | |
| 29 | 0.0140 | 0.36 | M-6 | 40 | 0.286 | 0.130 | 139.7 | 307.9 | 7.160 | 3.248 |

SPECIFICATIONS APPLYING TO CORE STACK WITH SQUARE CROSS SECTIONS

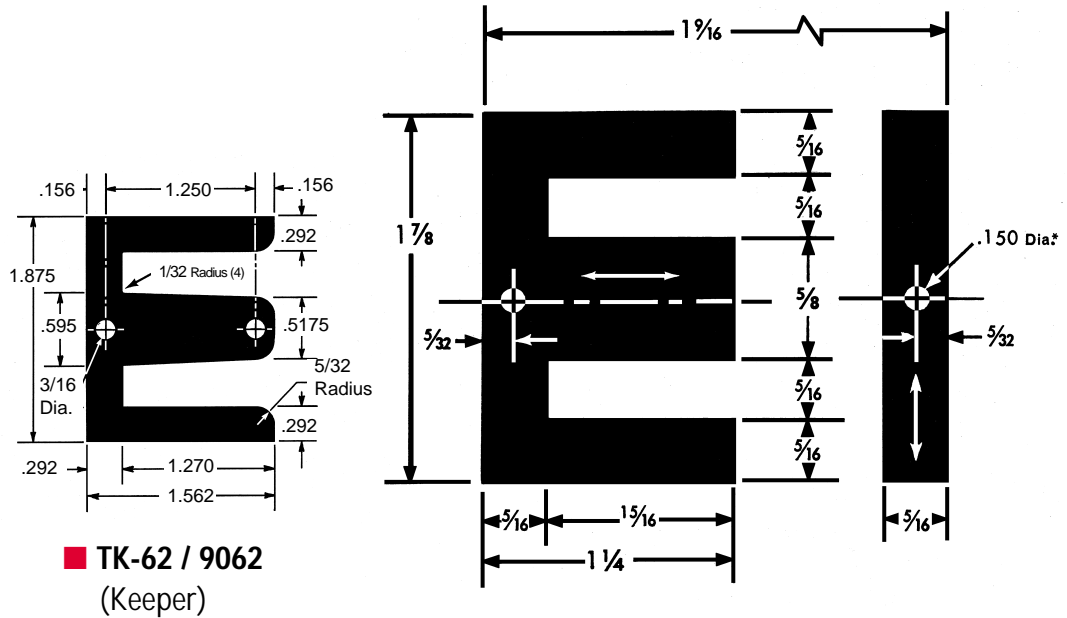
| | | | |
|-----------------------------|---------------------|-----------------|----------------|
| Window Dimensions | .938 in. x .313 in. | .293 sq. in. – | 1.890 sq. cm. |
| Volume, solid | | 1.443 cu. in. – | 23.643 cu. cm. |
| Cross Sectional Area, solid | | .391 sq. in. – | 2.520 sq. cm. |
| Length of Magnetic Path | | 3.750 in. – | 9.525 cm. |

Grain Direction

*Wire Holes

METRIC EQUIVALENTS

| Inches | Millimeters |
|--------|-------------|
| .150 | 3.8100 |
| 5/32 | 3.9688 |
| 5/16 | 7.9375 |
| 5/8 | 15.8750 |
| 15/16 | 23.8125 |
| 1-1/4 | 31.7500 |
| 1-9/16 | 39.6875 |
| 1-7/8 | 47.6250 |



ELECTRICAL STEEL SPECIFICATIONS – Weight and Count

| TEMPEL GAUGE | | | TEMPEL Grade No. | SQUARE STACK SPECIFICATIONS | | | | | WEIGHT PER 1000 SETS | |
|--------------|-----------|------------|------------------|-----------------------------|-------------------------|-----------|----------------|--------|----------------------|-----------|
| No. | Thickness | | | Sets of Pieces | Weight per Square Stack | | Sets of Pieces | | Pounds | Kilograms |
| | Inches | Millimeter | | | Pounds | Kilograms | Per lb | Per kg | | |
| 29 | 0.0140 | 0.36 | M-6 | 45 | 0.40 | 0.180 | 113.4 | 250.0 | 8.820 | 4.001 |
| 26 | 0.0185 | 0.47 | M-19-M-55 | 34 | 0.402 | 0.182 | 84.6 | 186.4 | 11.826 | 5.364 |
| 24 | 0.0250 | 0.64 | M-19-M-56 | 25 | 0.401 | 0.182 | 62.4 | 137.5 | 16.037 | 7.274 |

Center Leg Width

11/16"

EI-68 / 0068

8

SPECIFICATIONS APPLYING TO CORE STACK WITH SQUARE CROSS SECTIONS

Grain Direction

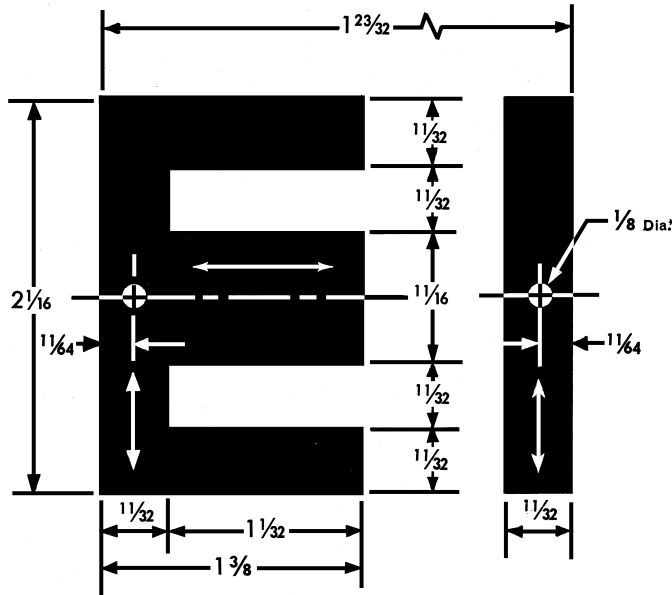


*Wire Holes

| | | | |
|-----------------------------|----------------------|-----------------|----------------|
| Window Dimensions | 1.031 in. x .344 in. | .354 sq. in. – | 2.287 sq. cm. |
| Volume, solid | | 1.933 cu. in. – | 31.674 cu. cm. |
| Cross Sectional Area, solid | | .473 sq. in. – | 3.049 sq. cm. |
| Length of Magnetic Path | | 4.125 in. – | 10.478 cm. |

METRIC EQUIVALENTS

| Inches | Millimeters |
|---------|-------------|
| 1/8 | 3.1750 |
| 11/64 | 4.3656 |
| 11/32 | 8.7313 |
| 11/16 | 17.4625 |
| 1-1/32 | 26.1938 |
| 1-3/8 | 34.9250 |
| 1-23/32 | 43.6563 |
| 2-1/16 | 52.3875 |



ELECTRICAL STEEL SPECIFICATIONS – Weight and Count

| TEMPEL GAUGE | | | TEMPEL Grade No. | SQUARE STACK SPECIFICATIONS | | | | WEIGHT PER 1000 SETS | | |
|--------------|-----------|------------|------------------|-----------------------------|-------------------------|-----------|----------------|----------------------|--------|-----------|
| No. | Thickness | | | Sets of Pieces | Weight per Square Stack | | Sets of Pieces | | Pounds | Kilograms |
| | Inches | Millimeter | | | Pounds | Kilograms | Per lb | Per kg | | |
| 29 | 0.0140 | 0.36 | M-6 | 49 | 0.526 | 0.239 | 93.1 | 205.2 | 10.742 | 4.872 |
| 26 | 0.0185 | 0.47 | M-19-M-55 | 37 | 0.533 | 0.242 | 69.4 | 153.1 | 14.403 | 6.533 |
| 24 | 0.0250 | 0.64 | M-19-M-56 | 28 | 0.547 | 0.248 | 51.2 | 112.9 | 19.531 | 8.859 |

SPECIFICATIONS APPLYING TO CORE STACK WITH SQUARE CROSS SECTIONS

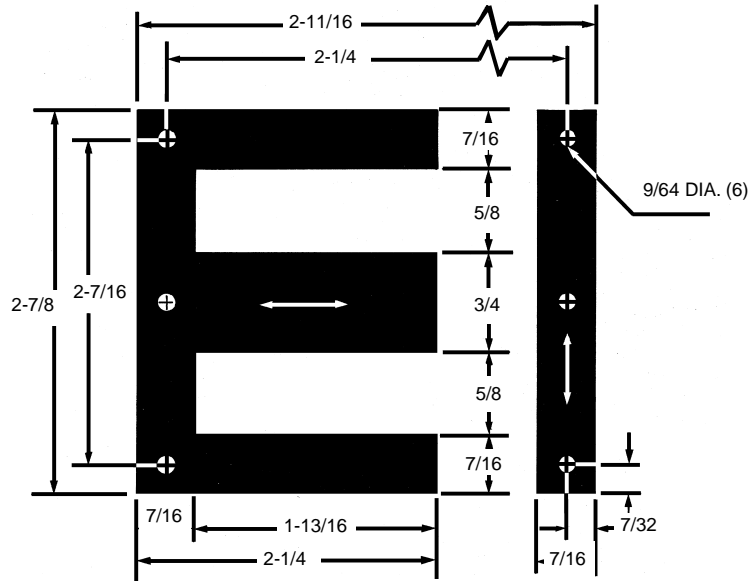
| | | | |
|-----------------------------|----------------------|-----------------|----------------|
| Window Dimensions | 1.813 in. x .625 in. | 1.133 sq. in. – | 7.308 sq. cm. |
| Volume, solid | | 4.026 cu. in. – | 65.971 cu. cm. |
| Cross Sectional Area, solid | | 0.563 sq. in. – | 3.629 sq. cm. |
| Length of Magnetic Path | | 6.563 in. – | 16.669 cm. |

Grain Direction

 Standard Corner Mounting Holes
 with Additional Holes

METRIC EQUIVALENTS

| Inches | Millimeters |
|---------|-------------|
| 9/64 | 3.5712 |
| 7/32 | 5.5575 |
| 7/16 | 11.025 |
| 5/8 | 15.8750 |
| 3/4 | 19.0500 |
| 1-7/32 | 30.9575 |
| 1-13/16 | 46.0375 |
| 2-1/4 | 57.1500 |
| 2-7/16 | 61.9125 |
| 2-11/16 | 68.2625 |
| 2-7/8 | 73.0250 |



EI-75H6 / 0073

6

ELECTRICAL STEEL SPECIFICATIONS – Weight and Count

| TEMPEL GAUGE | | TEMPEL Grade No. | SQUARE STACK SPECIFICATIONS | | | | | | WEIGHT PER 1000 SETS | |
|--------------|-----------|------------------|-----------------------------|-------------------------|--------|----------------|--------|--------|----------------------|--------|
| No. | Thickness | | Sets of Pieces | Weight per Square Stack | | Sets of Pieces | | Pounds | Kilograms | |
| | Inches | | | Millimeter | Pounds | Kilograms | Per lb | | | Per kg |
| 29 | 0.0140 | 0.36 | M-6 | 54 | 1.107 | .502 | 48.8 | 107.5 | 20.509 | 9.303 |

Center Leg Width

3/4"

EI-75H4 / 0072

Grain Direction

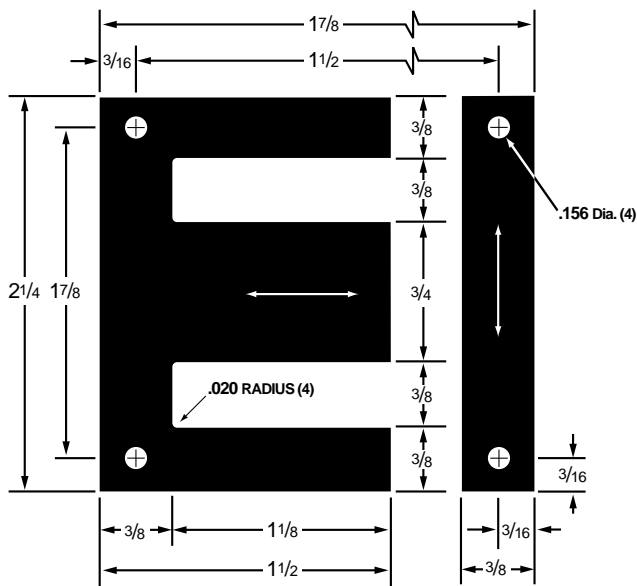
Standard Corner Mounting Holes

SPECIFICATIONS APPLYING TO CORE STACK WITH SQUARE CROSS SECTIONS

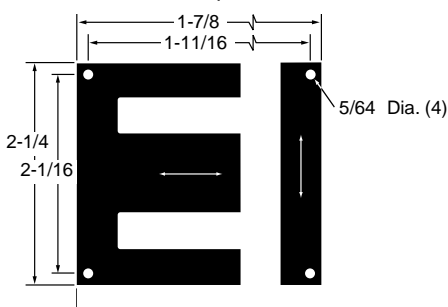
| | | | |
|-----------------------------|----------------------|-----------------|----------------|
| Window Dimensions | 1.125 in. x .625 in. | .422 sq. in. – | 2.722 sq. cm. |
| Volume, solid | | 2.453 cu. in. – | 40.194 cu. cm. |
| Cross Sectional Area, solid | | .563 sq. in. – | 3.629 sq. cm. |
| Length of Magnetic Path | | 4.500 in. – | 11.430 cm. |

METRIC EQUIVALENTS

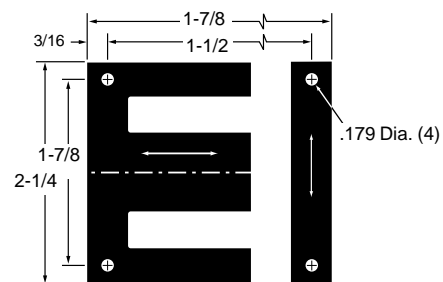
| Inches | Millimeters |
|--------|-------------|
| .156 | 3.9624 |
| 3/16 | 4.7625 |
| 3/8 | 9.5250 |
| 3/4 | 19.050 |
| 1-1/8 | 28.575 |
| 1-1/2 | 38.100 |
| 1-7/8 | 47.6250 |
| 2-1/4 | 57.150 |



Illustrations indicate different sizes and positions of holes available for EI-75 and compatible Keeper. Customizing available.



■ EI-75RH4/0079



■ EI-75LH4/0081

ELECTRICAL STEEL SPECIFICATIONS – Weight and Count

| TEMPEL GAUGE | | | TEMPEL Grade No. | SQUARE STACK SPECIFICATIONS | | | | WEIGHT PER 1000 SETS | | |
|--------------|-----------|------------|------------------|-----------------------------|-------------------------|-----------|----------------|----------------------|--------|-----------|
| No. | Thickness | | | Sets of Pieces | Weight per Square Stack | | Sets of Pieces | | Pounds | Kilograms |
| | Inches | Millimeter | | | Pounds | Kilograms | Per lb | Per kg | | |
| 29 | 0.0140 | 0.36 | M-6 | 54 | 0.680 | 0.309 | 79.3 | 174.8 | 12.602 | 5.718 |
| 26 | 0.0185 | 0.47 | M-19-M-55 | 41 | 0.699 | 0.318 | 58.6 | 129.1 | 17.064 | 7.742 |
| 24 | 0.0250 | 0.64 | M-19-M-56 | 30 | 0.695 | 0.316 | 43.1 | 95.0 | 23.176 | 10.515 |

SPECIFICATIONS APPLYING TO CORE STACK WITH SQUARE CROSS SECTIONS

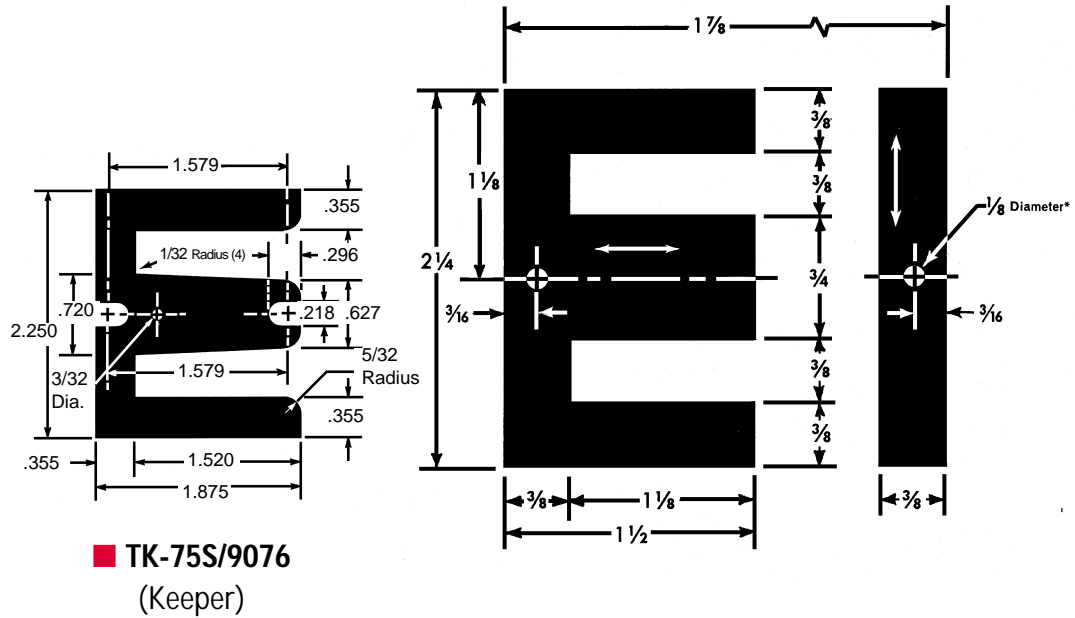
| | | | |
|-----------------------------|----------------------|-----------------|----------------|
| Window Dimensions | 1.125 in. x .375 in. | 0.422 sq. in. – | 02.722 sq. cm. |
| Volume, solid | | 2.513 cu. in. – | 41.178 cu. cm. |
| Cross Sectional Area, solid | | 0.563 sq. in. – | 03.629 sq. cm. |
| Length of Magnetic Path | | 4.500 in. – | 11.430 cm. |

Grain Direction

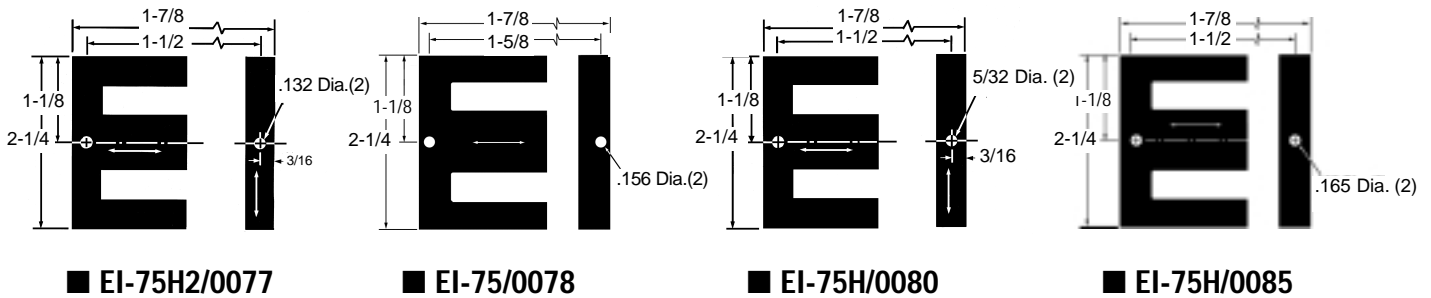
*Wire Holes

METRIC EQUIVALENTS

| Inches | Millimeters |
|--------|-------------|
| 1/8 | 3.1750 |
| 3/16 | 4.7625 |
| 3/8 | 9.5250 |
| 3/4 | 19.0500 |
| 1-1/8 | 28.5750 |
| 1-1/2 | 38.1000 |
| 1-7/8 | 47.6250 |
| 2-1/4 | 57.1500 |



Illustrations indicate different sizes and positions of holes available for EI-75 and compatible Keeper. Customizing available.



ELECTRICAL STEEL SPECIFICATIONS – Weight and Count

| TEMPEL GAUGE | | | TEMPEL Grade No. | SQUARE STACK SPECIFICATIONS | | | | WEIGHT PER 1000 SETS | | |
|--------------|-----------|------------|------------------|-----------------------------|-------------------------|-----------|----------------|----------------------|--------|-----------|
| No. | Thickness | | | Sets of Pieces | Weight per Square Stack | | Sets of Pieces | | Pounds | Kilograms |
| | Inches | Millimeter | | | Pounds | Kilograms | Per lb | Per kg | | |
| 29 | 0.0140 | 0.36 | M-6 | 54 | 0.691 | 0.314 | 78.1 | 172.2 | 12.802 | 05.807 |
| 26 | 0.0185 | 0.47 | M-19-M-55 | 41 | 0.704 | 0.319 | 58.3 | 128.4 | 17.164 | 07.786 |
| 24 | 0.0250 | 0.64 | M-19-M-56 | 30 | 0.698 | 0.317 | 43.0 | 94.7 | 23.276 | 10.558 |

Center Leg Width

3/4"

EI-75S / 0076

Grain Direction



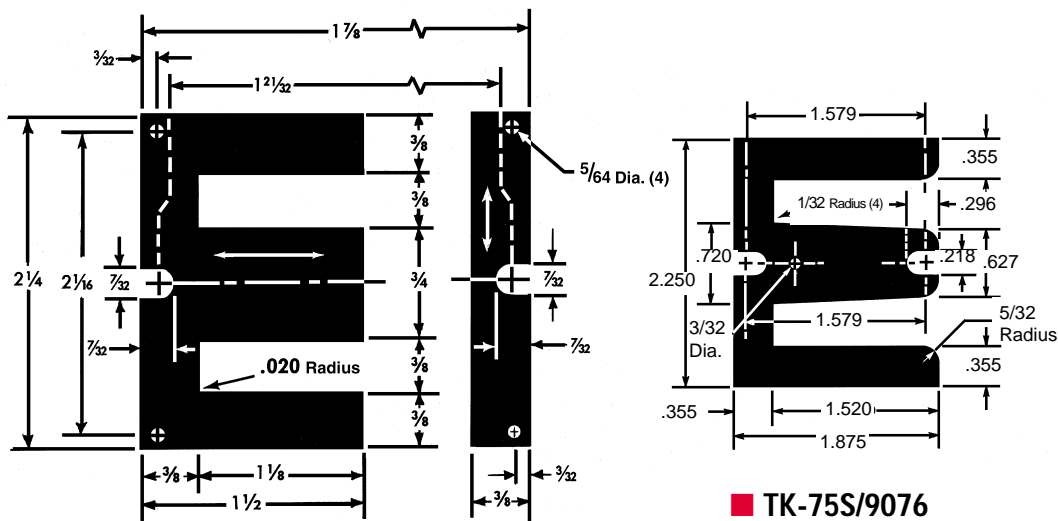
Standard Slots

SPECIFICATIONS APPLYING TO CORE STACK WITH SQUARE CROSS SECTIONS

| | | | |
|-----------------------------|----------------------|-----------------|----------------|
| Window Dimensions | 1.125 in. x .375 in. | 0.422 sq. in. – | 02.722 sq. cm. |
| Volume, solid | | 2.453 cu. in. – | 40.194 cu. cm. |
| Cross Sectional Area, solid | | 0.563 sq. in. – | 3.629 sq. cm. |
| Length of Magnetic Path | | 4.500 in. – | 11.430 cm. |

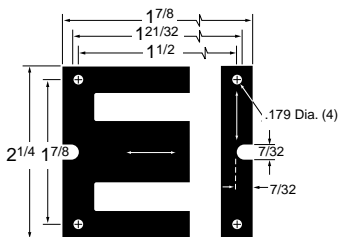
METRIC EQUIVALENTS

| Inches | Millimeters |
|---------|-------------|
| .020 | 0.5080 |
| 5/64 | 1.9844 |
| 3/32 | 2.3813 |
| 7/32 | 5.5563 |
| 3/8 | 9.5250 |
| 3/4 | 19.0500 |
| 1-1/8 | 28.5750 |
| 1-1/2 | 38.1000 |
| 1-21/32 | 42.0688 |
| 1-7/8 | 47.6250 |
| 2-1/16 | 52.3875 |
| 2-1/4 | 57.1500 |

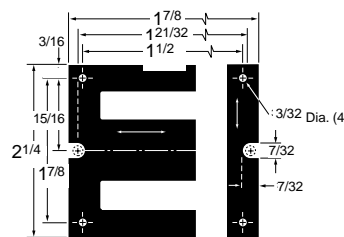


TK-75S/9076 (Keeper)

Illustrations indicate different sizes and positions of holes available for EI-75 and compatible Keeper. Customizing available.



EI-75HS/0071



EI-75HS/0084

ELECTRICAL STEEL SPECIFICATIONS – Weight and Count

| TEMPEL GAUGE | | | TEMPEL Grade No. | SQUARE STACK SPECIFICATIONS | | | | WEIGHT PER 1000 SETS | | |
|--------------|-----------|------------|------------------|-----------------------------|-------------------------|-----------|----------------|----------------------|--------|-----------|
| No. | Thickness | | | Sets of Pieces | Weight per Square Stack | | Sets of Pieces | | Pounds | Kilograms |
| | Inches | Millimeter | | | Pounds | Kilograms | Per lb | Per kg | | |
| 29 | 0.0140 | 0.36 | M-6 | 54 | 0.675 | 0.306 | 80.0 | 176.4 | 12.496 | 5.668 |
| 26 | 0.0185 | 0.47 | M-19-M-55 | 41 | 0.687 | 0.312 | 59.7 | 131.6 | 16.754 | 7.599 |
| 24 | 0.0250 | 0.64 | M-19-M-56 | 30 | 0.682 | 0.309 | 44.0 | 97.0 | 22.720 | 10.306 |

SPECIFICATIONS APPLYING TO CORE STACK WITH SQUARE CROSS SECTIONS

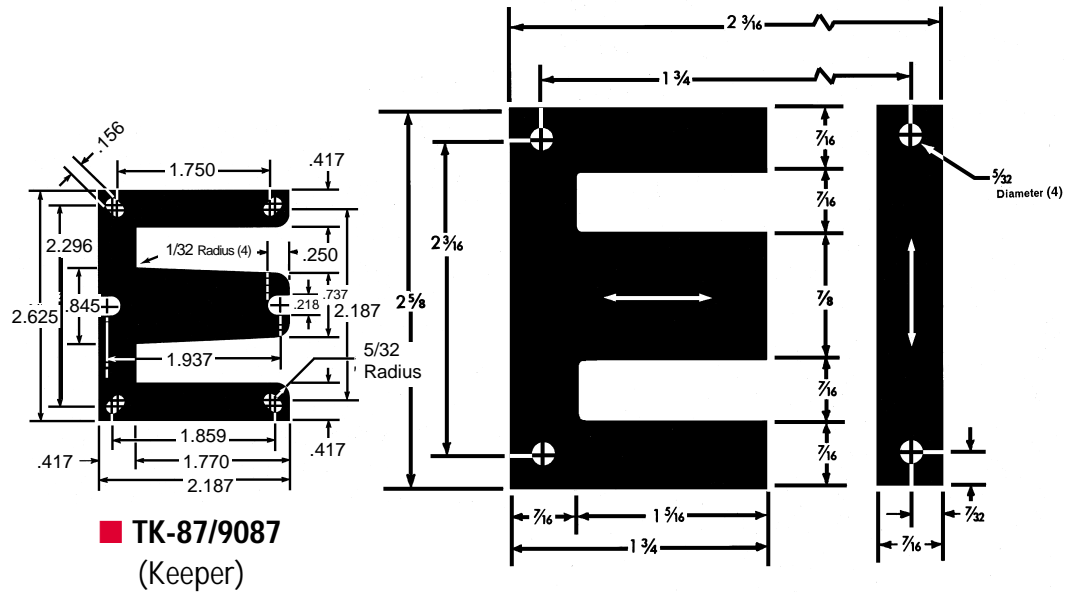
| | | | |
|-----------------------------|----------------------|-----------------|----------------|
| Window Dimensions | 1.313 in. x .438 in. | .574 sq. in. – | 3.705 sq. cm. |
| Volume, solid | | 3.952 cu. in. – | 64.769 cu. cm. |
| Cross Sectional Area, solid | | .766 sq. in. – | 4.940 sq. cm. |
| Length of Magnetic Path | | 5.250 in. – | 13.335 cm. |

Grain Direction
↔

Standard Corner Mounting Holes

METRIC EQUIVALENTS

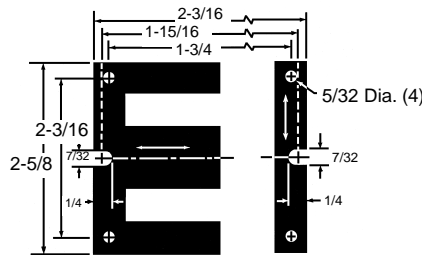
| Inches | Millimeters |
|--------|-------------|
| 5/32 | 3.9688 |
| 7/32 | 5.5562 |
| 7/16 | 11.1125 |
| 7/8 | 22.2250 |
| 1-5/16 | 33.3375 |
| 1-3/4 | 44.4500 |
| 2-3/16 | 55.5625 |
| 2-5/8 | 66.6750 |



EI-87H / 0087

13

Illustrations indicate different sizes and positions of holes available for EI-87 and compatible Keeper. Customizing available.



ELECTRICAL STEEL SPECIFICATIONS – Weight and Count

| TEMPEL GAUGE | | | TEMPEL Grade No. | SQUARE STACK SPECIFICATIONS | | | | WEIGHT PER 1000 SETS | | |
|--------------|-----------|------------|------------------|-----------------------------|-------------------------|-----------|----------------|----------------------|--------|-----------|
| No. | Thickness | | | Sets of Pieces | Weight per Square Stack | | Sets of Pieces | | Pounds | Kilograms |
| | Inches | Millimeter | | | Pounds | Kilograms | Per lb | Per kg | | |
| 29 | 0.0140 | 0.36 | M-6 | 63 | 1.087 | 0.493 | 57.9 | 127.7 | 17.259 | 7.829 |
| 26 | 0.0185 | 0.47 | M-19-M-55 | 47 | 1.088 | 0.493 | 43.2 | 95.3 | 23.140 | 10.496 |
| 24 | 0.0250 | 0.64 | M-19-M-56 | 35 | 1.098 | 0.498 | 31.9 | 70.3 | 31.381 | 14.234 |

Center Leg Width
15/16"

EI-93H / 0093

Grain Direction



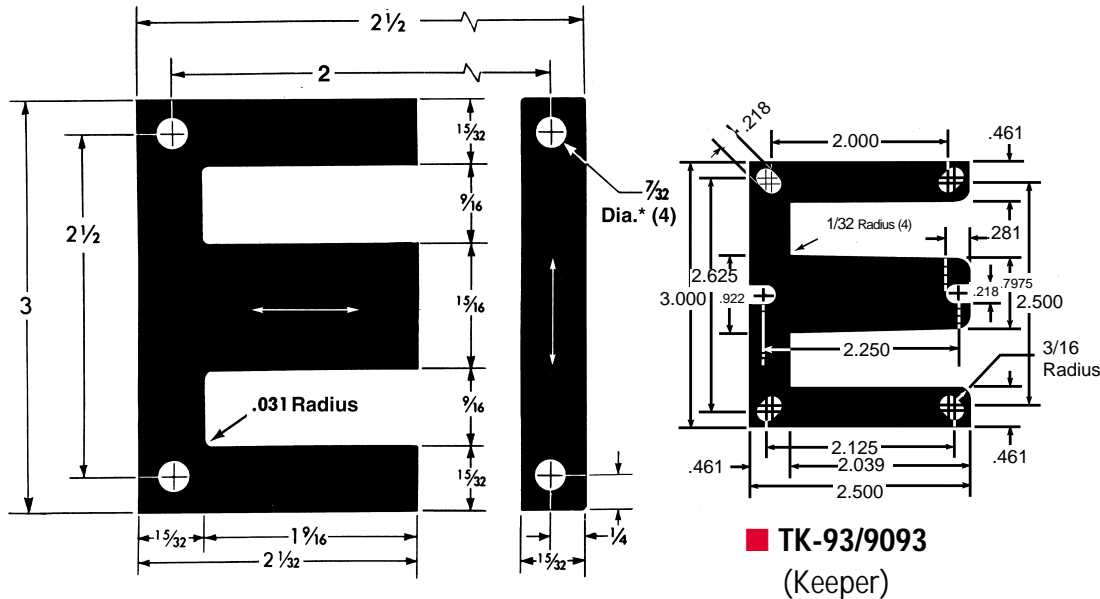
Standard Mounting Holes

SPECIFICATIONS APPLYING TO CORE STACK WITH SQUARE CROSS SECTIONS

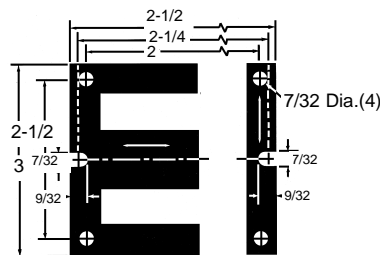
| | | | |
|-----------------------------|----------------------|-----------------|----------------|
| Window Dimensions | 1.563 in. x .563 in. | .879 sq. in. – | 5.670 sq. cm. |
| Volume, solid | | 5.242 cu. in. – | 85.907 cu. cm. |
| Cross Sectional Area, solid | | .879 sq. in. – | 5.670 sq. cm. |
| Length of Magnetic Path | | 6.125 in. – | 15.558 cm. |

METRIC EQUIVALENTS

| Inches | Millimeters |
|--------|-------------|
| .031 | 0.7874 |
| 7/32 | 5.5563 |
| 1/4 | 6.3500 |
| 15/32 | 11.9063 |
| 9/16 | 14.2875 |
| 15/16 | 23.8125 |
| 1-9/16 | 39.6875 |
| 2 | 50.8000 |
| 2-1/32 | 51.5938 |
| 2-1/2 | 63.5000 |
| 3 | 76.2000 |



Illustrations indicate different sizes and positions of holes available for EI-93 and compatible Keeper. Customizing available.



ELECTRICAL STEEL SPECIFICATIONS – Weight and Count

| TEMPEL GAUGE | | | TEMPEL Grade No. | SQUARE STACK SPECIFICATIONS | | | | WEIGHT PER 1000 SETS | | |
|--------------|-----------|------------|------------------|-----------------------------|-------------------------|-----------|----------------|----------------------|--------|-----------|
| No. | Thickness | | | Sets of Pieces | Weight per Square Stack | | Sets of Pieces | | Pounds | Kilograms |
| | Inches | Millimeter | | | Pounds | Kilograms | Per lb | Per kg | | |
| 29 | 0.0140 | 0.36 | M-6 | 67 | 1.432 | 0.649 | 46.8 | 103.2 | 21.365 | 9.691 |
| 26 | 0.0185 | 0.47 | M-19-M-55 | 51 | 1.461 | 0.663 | 34.9 | 77.0 | 28.647 | 12.994 |
| 24 | 0.0250 | 0.64 | M-19-M-56 | 38 | 1.476 | 0.670 | 25.7 | 56.7 | 38.848 | 17.621 |

SPECIFICATIONS APPLYING TO CORE STACK WITH SQUARE CROSS SECTIONS

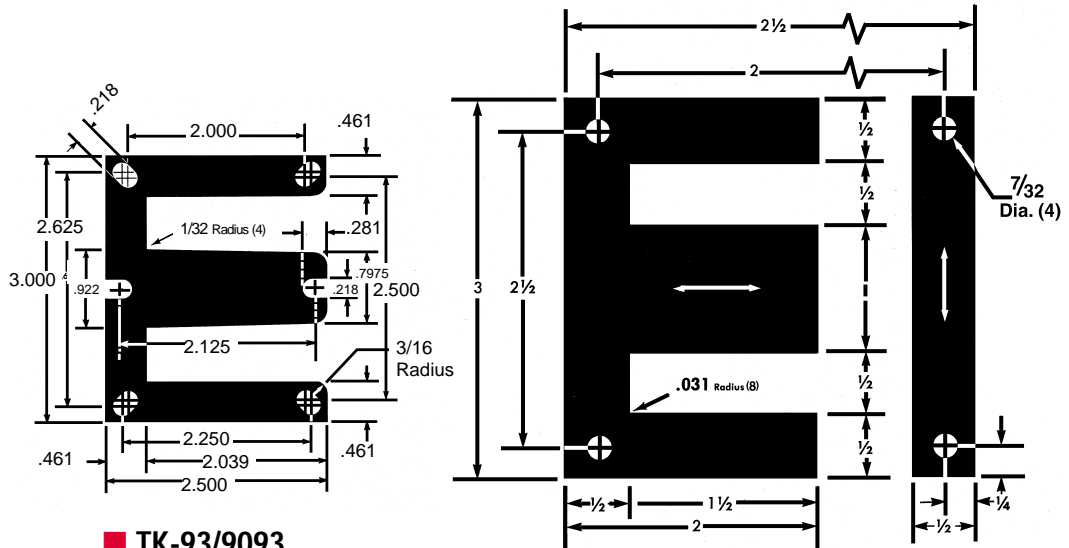
| | | | |
|-----------------------------|----------------------|-----------------|----------------|
| Window Dimensions | 1.500 in. x .500 in. | .750 sq. in. – | 4.839 sq. cm. |
| Volume, solid | | 5.850 cu. in. – | 95.859 cu. cm. |
| Cross Sectional Area, solid | | 1.000 sq. in. – | 6.452 sq. cm. |
| Length of Magnetic Path | | 6.000 in. – | 15.240 cm. |

Grain Direction

Standard Corner Mounting Holes

METRIC EQUIVALENTS

| Inches | Millimeters |
|--------|-------------|
| .031 | 0.7874 |
| 7/32 | 5.5563 |
| 1/4 | 6.3500 |
| 9/32 | 7.1438 |
| 1/2 | 12.7000 |
| 1 | 25.4000 |
| 1-1/2 | 38.1000 |
| 2 | 50.8000 |
| 2-1/2 | 63.5000 |
| 3 | 76.2000 |

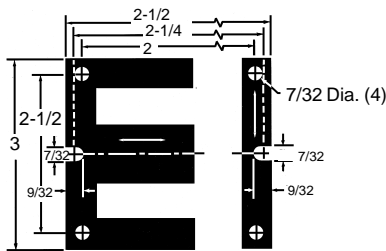


■ TK-93/9093
 (Keeper)

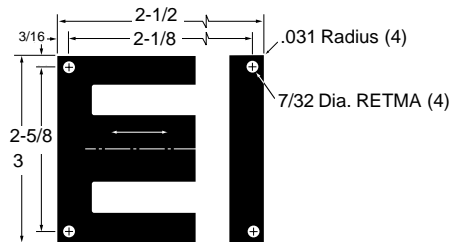
EI-100H / 0100

15

Illustrations indicate different sizes and positions of holes available for EI-100 and compatible Keeper. Customizing available.



■ EI-100HS/0101



■ EI-100RH/0105

ELECTRICAL STEEL SPECIFICATIONS – Weight and Count

| TEMPEL GAUGE | | | TEMPEL Grade No. | SQUARE STACK SPECIFICATIONS | | | | | WEIGHT PER 1000 SETS | |
|--------------|-----------|------------|------------------|-----------------------------|-------------------------|-----------|----------------|--------|----------------------|-----------|
| No. | Thickness | | | Sets of Pieces | Weight per Square Stack | | Sets of Pieces | | Pounds | Kilograms |
| | Inches | Millimeter | | | Pounds | Kilograms | Per lb | Per kg | | |
| 29 | 0.0140 | 0.36 | M-6 | 71 | 1.587 | 0.7198 | 44.7 | 98.6 | 22.351 | 10.138 |
| 26 | 0.0185 | 0.47 | M-19-M-55 | 54 | 1.618 | 0.7340 | 33.4 | 73.6 | 29.967 | 13.593 |
| 24 | 0.0250 | 0.64 | M-19-M-56 | 40 | 1.626 | 0.7370 | 24.6 | 54.2 | 40.639 | 18.434 |

Center Leg Width

1"

EI-12H / 0108

Grain Direction



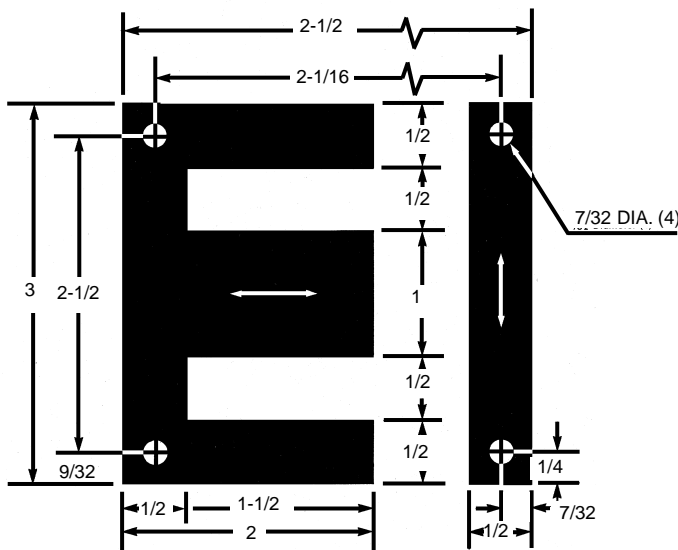
Corner Mounting Holes

SPECIFICATIONS APPLYING TO CORE STACK WITH SQUARE CROSS SECTIONS

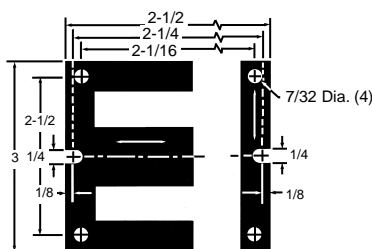
| | | | |
|-----------------------------|----------------------|-----------------|----------------|
| Window Dimensions | 1.500 in. x .500 in. | .750 sq. in. – | 4.839 sq. cm. |
| Volume, solid | | 5.850 cu. in. – | 95.859 cu. cm. |
| Cross Sectional Area, solid | | 1.000 sq. in. – | 6.452 sq. cm. |
| Length of Magnetic Path | | 6.000 in. – | 15.240 cm. |

METRIC EQUIVALENTS

| Inches | Millimeters |
|--------|-------------|
| 7/32 | 5.5575 |
| 1/4 | 6.3500 |
| 1/2 | 12.7000 |
| 1 | 25.4000 |
| 1-1/2 | 38.1000 |
| 2 | 50.8000 |
| 2-1/16 | 52.3875 |
| 2-1/2 | 63.5000 |
| 3 | 76.2000 |



Illustrations indicate different sizes and positions of holes available for EI-12 and compatible Keeper. Customizing available.



■ EI-12HS/0109

ELECTRICAL STEEL SPECIFICATIONS – Weight and Count

| TEMPEL GAUGE | | | TEMPEL Grade No. | SQUARE STACK SPECIFICATIONS | | | | WEIGHT PER 1000 SETS | | |
|--------------|-----------|------------|------------------|-----------------------------|-------------------------|-----------|----------------|----------------------|--------|-----------|
| No. | Thickness | | | Sets of Pieces | Weight per Square Stack | | Sets of Pieces | | Pounds | Kilograms |
| | Inches | Millimeter | | | Pounds | Kilograms | Per lb | Per kg | | |
| 29 | 0.0140 | 0.36 | M-6 | 71 | 1.587 | 0.7198 | 44.7 | 98.6 | 22.351 | 10.138 |
| 26 | 0.0185 | 0.47 | M-19-M-55 | 54 | 1.618 | 0.734 | 33.4 | 73.6 | 29.967 | 13.593 |
| 24 | 0.0250 | 0.64 | M-19-M-56 | 40 | 1.626 | 0.737 | 24.6 | 54.2 | 40.639 | 18.434 |

SPECIFICATIONS APPLYING TO CORE STACK WITH SQUARE CROSS SECTIONS

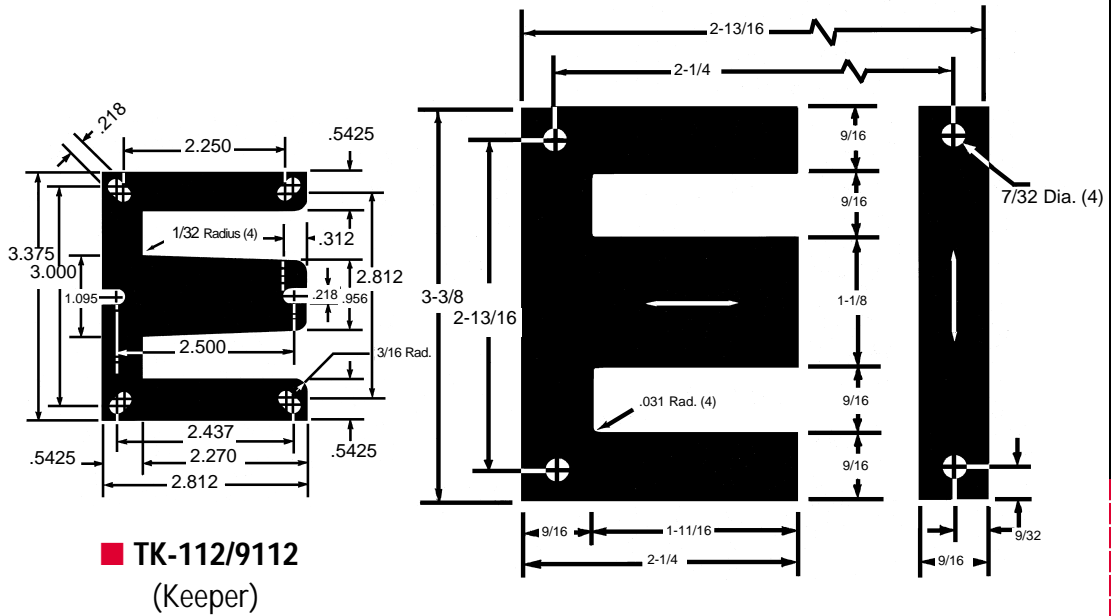
| | | | |
|-----------------------------|----------------------|-----------------|-----------------|
| Window Dimensions | 1.688 in. x .563 in. | .949 sq. in. – | 6.124 sq. cm. |
| Volume, solid | | 8.374 cu. in. – | 137.223 cu. cm. |
| Cross Sectional Area, solid | | 1.266 sq. in. – | 8.165 sq. cm. |
| Length of Magnetic Path | | 6.750 in. – | 17.145 cm. |

Grain Direction
↔

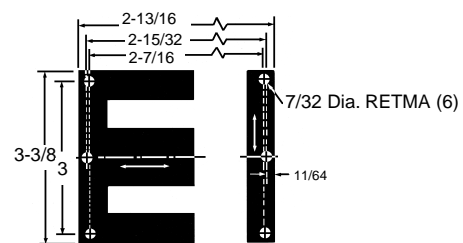
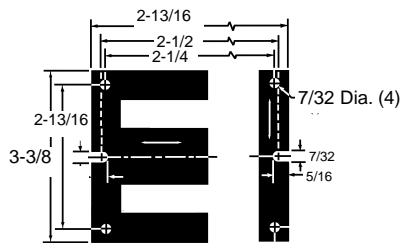
Standard Corner Mounting Holes

METRIC EQUIVALENTS

| Inches | Millimeters |
|---------|-------------|
| .031 | .7874 |
| 7/32 | 5.5563 |
| 9/32 | 7.1438 |
| 5/16 | 7.9375 |
| 9/16 | 14.2875 |
| 1-1/8 | 28.5750 |
| 1-11/16 | 42.8625 |
| 2-1/4 | 57.1500 |
| 2-1/2 | 63.5000 |
| 2-13/16 | 71.4375 |
| 3-3/8 | 85.7250 |



Illustrations indicate different sizes and positions of holes available for EI-112 and compatible Keeper. Customizing available.



ELECTRICAL STEEL SPECIFICATIONS – Weight and Count

| TEMPEL GAUGE | | | TEMPEL Grade No. | SQUARE STACK SPECIFICATIONS | | | | WEIGHT PER 1000 SETS | | |
|--------------|-----------|------------|------------------|-----------------------------|-------------------------|-----------|----------------|----------------------|--------|-----------|
| No. | Thickness | | | Sets of Pieces | Weight per Square Stack | | Sets of Pieces | | Pounds | Kilograms |
| | Inches | Millimeter | | | Pounds | Kilograms | Per lb | Per kg | | |
| 29 | 0.0140 | 0.36 | M-6 | 80 | 2.275 | 1.032 | 35.2 | 77.5 | 28.440 | 12.900 |
| 26 | 0.0185 | 0.47 | M-19-M-55 | 61 | 2.326 | 1.055 | 26.2 | 57.8 | 38.132 | 17.296 |
| 24 | 0.0250 | 0.64 | M-19-M-56 | 45 | 2.327 | 1.056 | 19.3 | 42.6 | 51.711 | 23.456 |

Center Leg Width

1-1/4"

EI-125H / 0125

Grain Direction

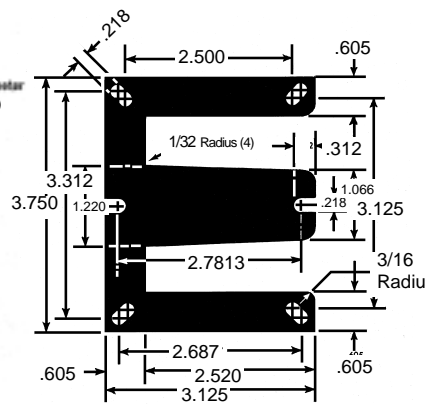
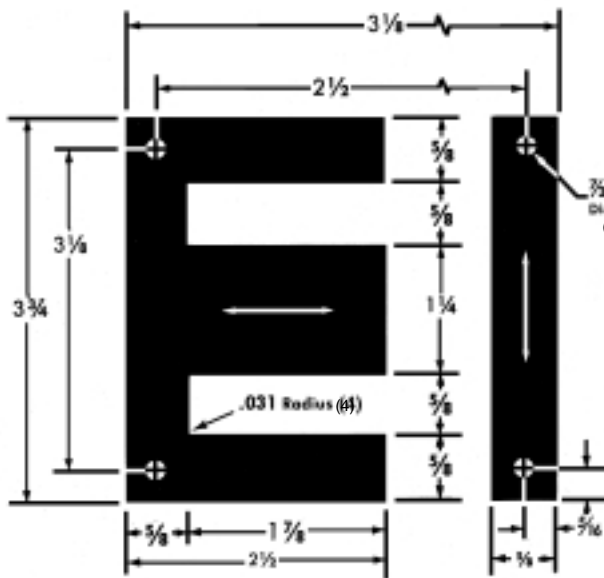
Standard Corner Mounting Holes

SPECIFICATIONS APPLYING TO CORE STACK WITH SQUARE CROSS SECTIONS

| | | | |
|-----------------------------|----------------------|------------------|-----------------|
| Window Dimensions | 1.875 in. x .625 in. | 1.172 sq. in. – | 7.560 sq. cm. |
| Volume, solid | | 11.531 cu. in. – | 188.957 cu. cm. |
| Cross Sectional Area, solid | | 1.563 sq. in. – | 10.081 sq. cm. |
| Length of Magnetic Path | | 7.500 in. – | 19.050 cm. |

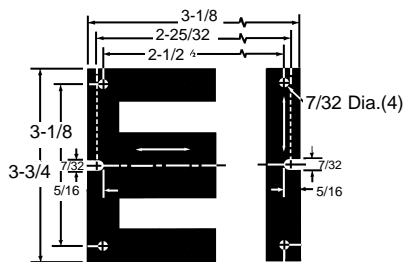
METRIC EQUIVALENTS

| Inches | Millimeters |
|--------|-------------|
| .031 | 0.7874 |
| 7/32 | 5.5563 |
| 5/16 | 7.9375 |
| 5/8 | 15.8750 |
| 1-1/4 | 31.7500 |
| 1-7/8 | 47.6250 |
| 2-1/2 | 63.5000 |
| 3-1/8 | 79.3750 |
| 3-3/4 | 95.2500 |

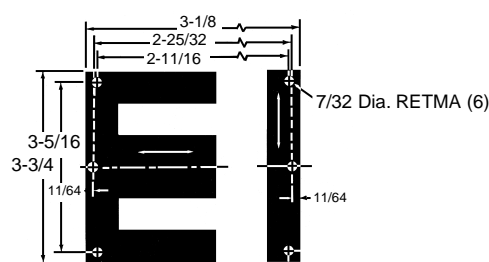


TK-125/9125 (Keeper)

Illustrations indicate different sizes and positions of holes available for EI-125 and compatible Keeper. Customizing available.



EI-125HS/0126



EI-125RH/0129

ELECTRICAL STEEL SPECIFICATIONS – Weight and Count

| TEMPEL GAUGE | | | TEMPEL Grade No. | SQUARE STACK SPECIFICATIONS | | | | WEIGHT PER 1000 SETS | | |
|--------------|-----------|------------|------------------|-----------------------------|-------------------------|-----------|----------------|----------------------|--------|-----------|
| No. | Thickness | | | Sets of Pieces | Weight per Square Stack | | Sets of Pieces | | Pounds | Kilograms |
| | Inches | Millimeter | | | Pounds | Kilograms | Per lb | Per kg | | |
| 29 | 0.0140 | 0.36 | M-6 | 89 | 3.137 | 1.423 | 28.4 | 62.5 | 35.246 | 15.987 |
| 26 | 0.0185 | 0.47 | M-19-M-55 | 68 | 3.213 | 1.458 | 21.2 | 46.7 | 47.257 | 21.436 |
| 24 | 0.0250 | 0.64 | M-19-M-56 | 50 | 3.204 | 1.453 | 15.6 | 34.4 | 64.086 | 29.069 |

SPECIFICATIONS APPLYING TO CORE STACK WITH SQUARE CROSS SECTIONS

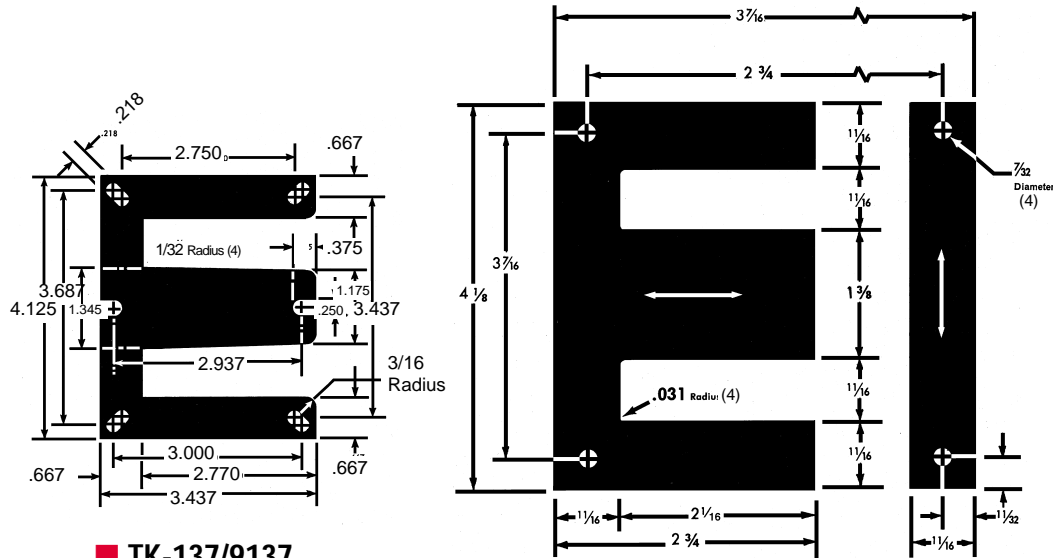
| | | | |
|-----------------------------|----------------------|------------------|-----------------|
| Window Dimensions | 2.063 in. x .688 in. | 1.418 sq. in. – | 9.148 sq. cm. |
| Volume, solid | | 15.391 cu. in. – | 252.213 cu. cm. |
| Cross Sectional Area, solid | | 1.891 sq. in. – | 12.198 sq. cm. |
| Length of Magnetic Path | | 8.250 in. – | 20.955 cm. |

Grain Direction

 Standard Corner Mounting Holes

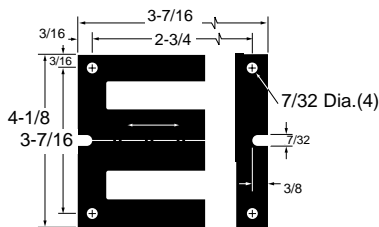
METRIC EQUIVALENTS

| Inches | Millimeters |
|--------|-------------|
| .031 | 0.7874 |
| 7/32 | 5.5563 |
| 11/32 | 8.7313 |
| 11/16 | 17.4625 |
| 1-3/8 | 34.9250 |
| 2-1/16 | 52.3875 |
| 2-3/4 | 69.8500 |
| 3-7/16 | 87.3125 |
| 4-1/8 | 104.7750 |

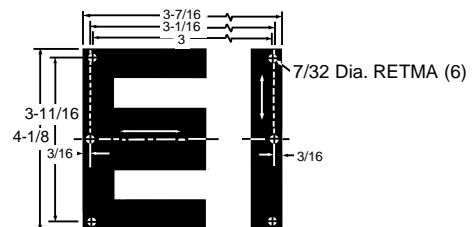


■ TK-137/9137
(Keeper)

Illustrations indicate different sizes and positions of holes available for EI-137 and compatible Keeper. Customizing available.



■ EI-137HS/0137



■ EI-137RH/0141

ELECTRICAL STEEL SPECIFICATIONS – Weight and Count

| TEMPEL GAUGE | | | TEMPEL Grade No. | SQUARE STACK SPECIFICATIONS | | | | WEIGHT PER 1000 SETS | | |
|--------------|-----------|------------|------------------|-----------------------------|-------------------------|-----------|----------------|----------------------|--------|-----------|
| No. | Thickness | | | Sets of Pieces | Weight per Square Stack | | Sets of Pieces | | Pounds | Kilograms |
| | Inches | Millimeter | | | Pounds | Kilograms | Per lb | Per kg | | |
| 29 | 0.0140 | 0.36 | M-6 | 98 | 4.191 | 1.901 | 23.4 | 51.5 | 42.768 | 19.399 |
| 26 | 0.0185 | 0.47 | M-19-M-55 | 74 | 4.243 | 1.925 | 17.4 | 38.4 | 57.343 | 26.010 |
| 24 | 0.0250 | 0.64 | M-19-M-56 | 55 | 4.277 | 1.940 | 12.9 | 28.4 | 77.763 | 35.273 |

Center Leg Width

1-3/8"

EI-140RH / 0140

20

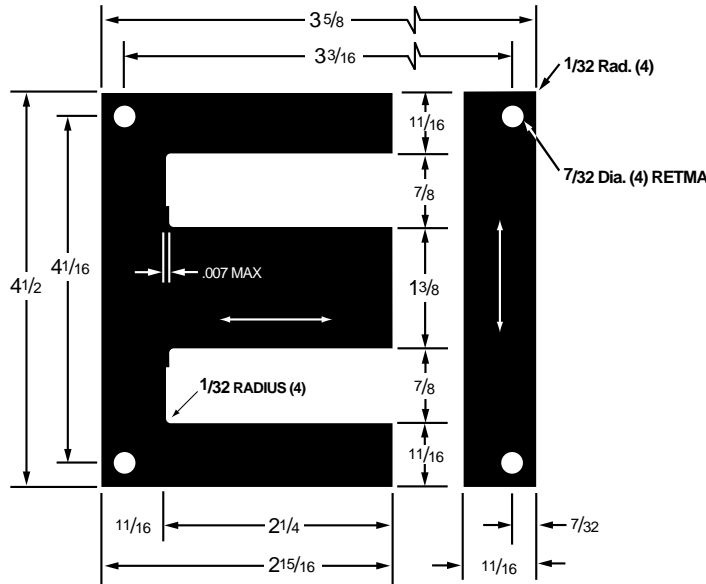
SPECIFICATIONS APPLYING TO CORE STACK WITH SQUARE CROSS SECTIONS



| | | | |
|-----------------------------|---------------------|------------------|-----------------|
| Window Dimensions | 2.25 in. x .875 in. | 1.968 sq. in. – | 12.693 sq. cm. |
| Volume, solid | | 16.804 cu. in. – | 275.371 cu. cm. |
| Cross Sectional Area, solid | | 1.891 sq. in. – | 12.198 sq. cm. |
| Length of Magnetic Path | | 9.000 in. – | 22.860 cm. |

METRIC EQUIVALENTS

| Inches | Millimeters |
|--------|-------------|
| 7/32 | 5.5563 |
| 11/16 | 17.4625 |
| 7/8 | 22.2500 |
| 1-3/8 | 34.9250 |
| 3-5/8 | 92.0750 |
| 4-1/2 | 114.3000 |



ELECTRICAL STEEL SPECIFICATIONS – Weight and Count

| TEMPEL GAUGE | | | TEMPEL Grade No. | SQUARE STACK SPECIFICATIONS | | | | WEIGHT PER 1000 SETS | | |
|--------------|-----------|------------|------------------|-----------------------------|-------------------------|-----------|----------------|----------------------|--------|-----------|
| No. | Thickness | | | Sets of Pieces | Weight per Square Stack | | Sets of Pieces | | Pounds | Kilograms |
| | Inches | Millimeter | | | Pounds | Kilograms | Per lb | Per kg | | |
| 26 | 0.0185 | 0.47 | M-19-M-55 | 74 | 4.620 | 2.096 | 16.0 | 35.3 | 62.440 | 28.330 |
| 24 | 0.0250 | 0.64 | M-19-M-56 | 55 | 4.650 | 2.297 | 11.8 | 26.0 | 84.650 | 38.400 |