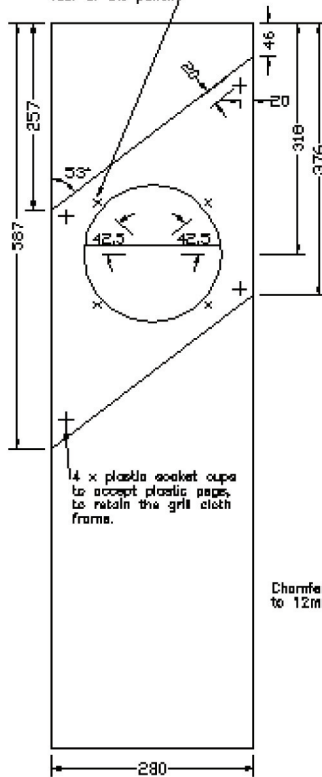


Rectangular out-cut 100 X 80 on panel & in order to fit the wiring loom terminal block.

4 x 7mm holes on a 208mm p.c.d. M8 fixing inserts to be fitted to the rear of the panel.



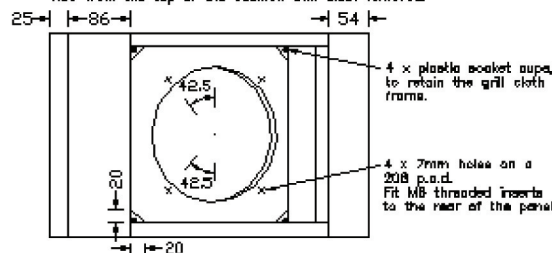
4 x plastic socket cups to accept plastic caps, to retain the grill cloth frame.

View of front, without grill cloth frame.

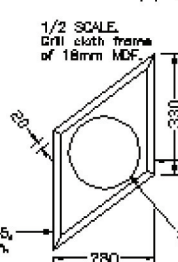
Academy

Copyright: Lowther Loudspeaker Systems Limited,
P.O. Box 184, Sidcup, Kent DA14 4NL,
England, UK.
Telephone: +44 20 8330 9188
Fax: +44 20 8308 0778
e-mail: sales@lowtherloudspeakers.com
sales@lowtherloudspeakers.co.uk
Website: https://www.lowtherloudspeakers.co.uk
https://www.lowtherloudspeakers.com

View from the top of the cabinet. Grill cloth removed.



1/2 SCALE. Grill cloth frame of 18mm MDF.

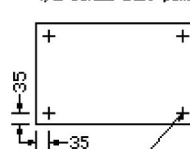


Each grill frame is to be covered with acoustically transparent cloth. Each frame is fixed by plastic pegs - location shown on main drawing.

1/2 SCALE. Material: 18mm square softwood.

Scale unless otherwise shown. Material: MDF board 18mm thick except the front and rear panels. These are 20mm thick. All dimensions are in mm. All panels to be firmly glued and pinned. Cabinet carcasses are to mirror veneered in pairs. All visible panels are to be veneered.

1/2 SCALE. Base panel.



4 x M8 threaded inserts, fixed to the upper side of the panel. Drill clearance holes through.

Measurements with symbol \odot are to be EXACT.